

Terminal markers

Terminal markers	Introduction	B.2
	Selection table – terminal markers	B.3
	DEK standard printing	B.6
	Dekafix	B.10
	WS / ZS	B.12
	MultiFit for use with other makes of terminals	B.16
	Cross-reference table	B.20
	Tag carrier	B.27

Terminal markers

Weidmüller's multitude of different terminal markers enable users to solve virtually every labelling task of all types of wire and cable connectors. Whether multi-character labelling, ready-to-use markers with standard printing or individual, custom markers, whether white or coloured or group designations at terminals, the comprehensive range of Weidmüller products solves every marking task simply, quickly and clearly.

The tables on the following pages show which markers fit the various terminal series. The terminal pitch governs the selection of a marker. For example, a WDU 2.5 terminal has a pitch of 5 mm, the WS 12/5 marker is 12 mm long and suitable for a 5 mm pitch.

Whole blocks of terminals can be marked as a strip using the Weidmüller system. When a terminal with a larger pitch has to be marked (e.g. WDU 16), a smaller marker (e.g. WS 12/5) can be clipped onto it. Most of the markers are compatible with each other.

The two traditional marker series, DEK and WS, are available as ready-to-use markers. And these markers are also available in the MultiCard format for printing by users themselves.

MultiCards can be printed on with the innovative PrintJet, Smark Laser, Plotter MCP Plus or MC-Mobilo printing systems, using M-Print PRO® software.

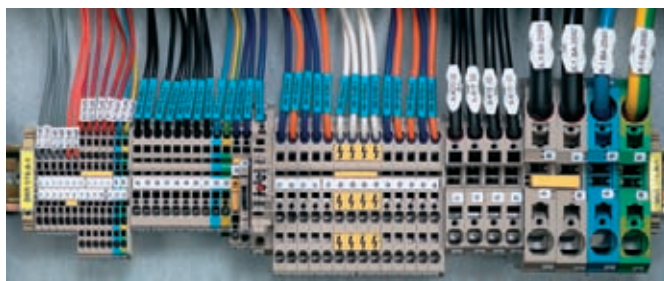
To see a small selection of the Weidmüller markers, order our bag of samples, order No. **1646670000**.

Owing to the sheer number of possible applications and environmental influences such as moisture, radiation, gases or heat/cold to which the products can be exposed, Weidmüller accepts no liability for the suitability of products in all customer applications. Suitability tests for specific applications must therefore be carried out by the customer. However, Weidmüller will be happy to provide help and advice upon request.

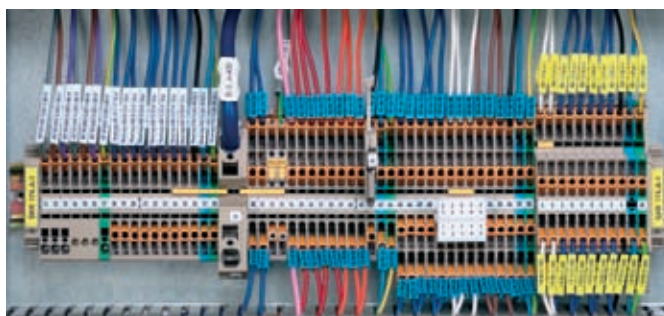
W series



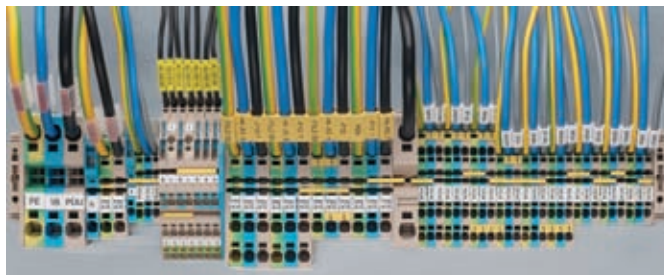
Z series



I series



P series



Due to the different identification system available on the market, we wish to point out that Weidmüller does not guarantee industrial identification products if the Weidmüller components (markers – transparent sleeves – ink/toner/colour ink ribbons – printing systems) are combined with third-party products, unless Weidmüller has explicitly agreed for the purpose of an individual application.

Selection table

Designation	Terminal width	DEK	WS	ZS	SchT 7	SchT 9/4	SchT 14/6	WTS 3/4	WGB 5 / WAD 5	WGB 8/ WAD 8	WAD 12	WAD 27	ZGB 15 / ZGB 30	BZT 1	BZT 2	EM 8/30
AKE 2.5/AKZ 2.5...	5	5	-	-	-	-	-	-	-	-	-	-	-	-	-	-
AKZ 1.5...	5	5	-	-	-	-	-	-	-	-	-	-	-	-	-	-
AKZ 4.../AKB 4...	6	6	8/5	-	-	x	-	-	-	-	-	-	-	-	-	-
BZT ZVL 1.5	5.08	5	12/5	-	-	-	-	-	-	-	-	-	-	-	-	-
DLA 2.5...	6	6	8/5	-	x	x	x	-	-	-	-	-	-	-	-	-
DLD 2.5...	6	6	8/5	-	x	x	x	-	-	-	-	-	-	-	-	-
DLI 2.5	6	6	8/5	-	x	x	x	-	-	-	-	-	-	-	-	-
EW 15	9.5	5	12/5	-	x	x	-	x	-	-	-	-	-	-	-	-
EW 15/2	8	5	-	-	-	-	-	-	-	-	-	-	-	-	-	-
EW 35	8.5	5	8/5	-	-	-	-	x	-	-	-	-	-	-	-	-
EWK	8.5	5	8/5	-	-	-	-	-	-	-	-	-	-	-	-	-
EWK 1	8.5	5	8/5	-	-	-	-	x	-	-	-	-	-	-	-	-
EWK 2	8.5	5	8/5	-	-	-	-	-	-	-	-	-	-	-	-	-
IAK 1.5N 3L	5	5	10/5 ²⁾	10/5	-	-	-	-	-	-	-	-	x	-	-	-
IDK 1.5N	5	5	10/5 ²⁾	10/5	-	x ³⁾	-	-	-	-	-	-	-	-	-	-
IDK 1.5N/V	5	5	10/5 ²⁾	10/5	-	-	-	-	-	-	-	-	x	-	-	-
IDU 1.5 N ...	5	5	10/5 ²⁾	10/5	-	-	-	-	-	-	-	-	x	-	-	-
IDU 2.5N...	6	6	10/6 ¹⁾	12/6	-	-	-	-	-	-	-	-	-	-	-	-
IEK 1.5N...	5	5	10/5 ²⁾	10/5	-	-	-	-	-	-	-	-	x	-	-	-
IKK 1.5N...	5	5	10/5 ²⁾	10/5	-	-	-	-	-	-	-	-	x	-	-	-
IPE 1.5N...	5	5	10/5 ²⁾	10/5	-	-	-	-	-	-	-	-	x	-	-	-
IPE 2.5N...	6	6	10/6 ¹⁾	12/6	-	-	-	-	-	-	-	-	-	-	-	-
ITR 1.5N...	5	5	10/5 ²⁾	10/5	-	-	-	-	-	-	-	-	x	-	-	-
ITR 2.5N...	6	6	10/6 ¹⁾	12/6	-	-	-	-	-	-	-	-	-	-	-	-
MAK 2.5/MLI 1.5...	6	6	8/5	-	x	x	x	-	-	-	-	-	x	-	-	-
WDK 1.5/R 3.5...	3.5	3.5	-	-	-	-	-	-	-	-	-	-	-	-	-	-
WDK 2.5 ...	5	5	8/5	-	-	x	-	-	-	-	-	-	x	-	-	-
WDK 2.5 800V	6	6	8/5	-	-	x	-	-	-	-	-	-	x	-	-	-
WDK 2.5/BLA R5.08	5.08	5	8/5	-	-	-	-	x	-	-	-	-	-	-	-	-
WDK 2.5/BLZ R5.08	5.08	5	8/5	-	-	-	-	x	-	-	-	-	-	-	-	-
WDK 2.5N...	5	5	8/5	-	-	-	-	-	-	-	-	-	-	-	-	-
WDK 4N...	5	5	8/5	-	-	-	-	-	-	-	-	-	-	-	-	-
WDL 2.5/...	6	6	8/5	-	-	-	-	x	-	-	-	-	x	-	-	-
WDT 1.5	6.5	6.5	8/5	-	-	-	-	-	-	-	-	-	-	-	-	-
WDTR 2.5...	6.2	6	8/5	-	-	x	-	-	-	-	-	-	-	-	-	-
WDU (WPE) 120/150	32	5	10/5	-	-	-	-	x	-	-	-	x	-	-	-	-
WDU (WPE) 35 N	16	5	12/5	-	x	x	x	x	-	-	-	-	x	-	-	-
WDU (WPE) 70/95	27	5	12/5	-	-	-	-	x	-	-	-	x	-	-	-	-
WDU (WPE) 70N	20.5	5	12/5	-	x	x	x	x	-	-	-	-	x	-	-	-
WDU 1.5 LD/BLA	5.08	5	12/5	-	x	x	x	x	-	-	-	-	x	-	-	-
WDU 1.5/BLA	5.08	5	12/5	-	x	x	x	x	-	-	-	-	x	-	-	-
WDU 1.5/BLZ/LD/5.08	5.08	5	12/5	-	x	x	x	x	-	-	-	-	x	-	-	-
WDU 1.5/R 3.5...	3.5	3.5	-	-	-	-	-	-	-	-	-	-	-	-	-	-
WDU 1.5/R/BLA	5.08	5	12/5	-	x	x	x	x	-	-	-	-	x	-	-	-
WDU 1.5/ZZ	5	5	12/5	-	x	x	x	x	-	-	-	-	x	-	-	-
WDU 10 SL	10	5	12/5	-	x	x	x	x	x	x	-	-	x	-	-	-
WDU 10...	10	5	12/5	-	x	x	x	x	x	x	-	-	x	-	-	-
WDU 16 (Z/A)	12	5	12/5	-	x	x	x	x	-	-	x	-	x	-	-	-
WDU 16 N	12	5	12/5	-	x	x	x	x	-	-	-	-	x	-	-	-
WDU 2.5 F	5	5	12/5	-	-	-	-	x	-	-	-	-	-	-	-	-
WDU 2.5 FF	5	5	12/5	-	x	-	-	x	-	-	-	-	-	-	-	-
WDU 2.5 N (WDU 1.5)	5	5	12/5	-	x	x	x	x	-	-	-	-	x	-	-	-
WDU 2.5 TC...	5	5	12/5	-	x	x	-	x	-	-	-	-	x	-	-	-
WDU 2.5...	5	5	12/5	-	x	x	x	x	x	-	-	-	x	-	-	-
WDU 25/1.5/ZZ	5	5	12/5	-	x	x	x	x	-	-	-	-	x	-	-	-
WDU 2.5/BLZ R7.62	7.62	5	-	-	-	-	-	-	-	-	-	-	x	-	-	-
WDU 240...	36	5	12/5	-	-	-	-	-	-	-	-	-	-	-	-	-
WDU 35	16	5	12/5	-	x	x	x	x	-	-	x	-	x	-	-	-
WDU 4 ...	6	6	12/6	-	x	x	x	x	x	-	-	-	x	-	-	-
WDU 4N ...	6	6	12/6	-	x	x	x	x	-	-	-	-	x	-	-	-
WDU 50N	18.5	5	12/5	-	-	-	-	-	-	-	-	-	-	-	-	-
WDU 6 ...	8	8	12/8	-	x	x	x	x	x	x	-	-	x	-	-	-
WDU 95N	27	8	15/5	-	-	-	-	-	-	-	-	-	-	-	-	-
WDUL 4	6	6	12/6	-	x	x	x	x	x	-	-	-	x	-	-	-
WEW 32/1	12.2	5	12/5	-	x	x	x	x	-	-	-	x	x	-	-	-
WEW 35/1	12.2	5	12/5	-	x	x	x	x	-	-	-	x	x	-	-	-
WEW 35/2	8	8	12/5	-	x	x	x	x	-	-	x	-	-	-	-	x
WF 10...	35.6	6	15/5	-	-	-	-	-	-	-	-	-	-	-	-	-
WF 12...	35.6	6	15/5	-	-	-	-	-	-	-	-	-	-	-	-	-
WF 5...	13	6	15/5	-	-	-	-	-	-	-	-	-	-	-	-	-
WF 6...	19.6	6	15/5	-	-	-	-	-	-	-	-	-	-	-	-	-
WF 8...	24.6	6	15/5	-	-	-	-	-	-	-	-	-	-	-	-	-
WFF 120...	42	5	12/6.5	-	-	-	-	-	-	-	-	-	-	-	-	-
WFF 185...	55	5	12/6.5	-	-	-	-	-	-	-	-	-	-	-	-	-
WFF 300...	55	5	12/6.5	-	-	-	-	-	-	-	-	-	-	-	-	-
WFF 35...	27	5	12/5	-	-	-	-	-	-	-	-	-	-	-	-	-
WFF 70...	32	5	12/6.5	-	-	-	-	-	-	-	-	-	-	-	-	-
WMA 4...	6	6	12/6	-	x	x	x	x	x	-	-	-	x	-	-	-
WNT 10	10	5	12/5	-	x	x	x	x	-	-	-	-	x	-	-	-
WNT 16 N	12	5	12/5	-	x	x	x	x	-	-	-	-	x	-	-	-
WNT 2.5	5	5	12/5	-	x	x	x	x	-	-	-	-	x	-	-	-

1) = WS 10/6 Middle; 2) = WS 10/5 Middle; 3) = SnapMark

Selection table – terminal markers

Selection table

Designation

Designation	Terminal width	DEK	WS	ZS	Scht 7	Scht 9/4	Scht 14/6	WTS 3/4	WGB 5 / WAD 5	WGB 8 / WAD 8	WAD 12	WAD 27	ZGB 15 / ZGB 30	BZT 1	BZT 2	EM 8/30
WNT 35 N	16	5	12/5	-	x	x	x	x	-	-	-	-	x	-	-	-
WNT 4	6	6	12/6	-	x	x	x	x	-	-	-	-	x	-	-	-
WNT 6	8	8	12/5	-	x	x	x	x	-	-	-	-	x	-	-	-
WNT 70 N	20,5	5	12/5	-	x	x	x	x	-	-	-	-	x	-	-	-
WPE 1.5/R3.5	3,5	3,5	12/3,5	-	-	-	-	-	-	-	-	-	-	-	-	-
WPE 1.5/ZZ	5	5	12/5	-	x	x	x	x	-	-	-	-	x	-	-	-
WPE 10...	10	5	12/5	-	x	x	x	x	-	-	-	-	x	-	-	-
WPE 120	32	8	12/6,5	-	-	-	-	-	-	-	-	-	-	-	-	-
WPE 16	12	5	12/5	-	x	x	x	x	-	-	-	-	x	-	-	-
WPE 16 N	12	5	12/5	-	x	x	x	x	-	-	-	-	x	-	-	-
WPE 2.5 N (WPE 1.5)	5	5	12/5	-	x	x	x	x	-	-	-	-	x	-	-	-
WPE 2,5...	5	5	12/5	-	x	x	x	x	-	-	-	-	x	-	-	-
WPE 2,5/1,5/ZR	5	5	12/5	-	-	-	-	-	-	-	-	-	-	-	-	-
WPE 35...	16	5	12/5	-	x	x	x	x	-	-	-	-	x	-	-	-
WPE 4	6	6	12/6	-	x	x	x	x	-	-	-	-	x	-	-	-
WPE 4N	6	6	12/6	-	-	-	-	-	-	-	-	-	-	-	-	-
WPE 50N	18,5	8	12/6,5	-	-	-	-	-	-	-	-	-	-	-	-	-
WPE 6	8	8	12/5	-	x	x	x	x	-	-	-	-	x	-	-	-
WPE 95N/120N	27	8	15/5	-	-	-	-	-	-	-	-	-	-	-	-	-
WPO 4	6	6	10/6	-	-	-	-	-	-	-	-	-	x	-	-	-
WSI 6...	8	8	12/5	-	-	-	-	x	-	-	-	-	x	-	-	-
WSI 6/2...	12	8	12/6,5	-	-	-	-	-	-	-	-	-	-	-	-	-
WTD 6/1	8	8	12/5	-	-	-	-	x	-	-	-	-	x	-	-	-
WTL 4 ...	6	6	12/6	-	-	-	-	-	-	-	-	-	-	-	-	-
WTL 6/1...	8	8	12/8	-	-	-	-	x	-	-	-	-	x	-	-	-
WTL 6/2	8	8	12/8	-	-	-	-	x	-	-	-	-	x	-	-	-
WTL 6/3...	8	8	12/8	-	-	-	-	x	-	-	-	-	x	-	-	-
WTQ 6/1	8	8	12/8	-	-	-	-	x	-	-	-	-	x	-	-	-
WTR 2,5 ...	5	5	12/5	-	-	-	-	x	-	-	-	-	x	-	-	-
WTR 4...	6	6	12/6	-	-	-	-	-	-	-	-	-	-	-	-	-
ZAP/TW ZIA 1.5/...	3,8	3,5	-	-	-	-	-	-	-	-	-	-	-	-	-	-
ZDK 1.5...	3,5	3,5	12/3,5	-	-	-	-	-	-	-	-	-	-	-	-	-
ZDK 2.5...	5	5	12/5	15/5	-	-	-	x	-	-	-	-	x	-	-	-
ZDK 2,5-2...	5	5	10/5	10/5	-	-	-	-	-	-	-	-	-	-	-	-
ZDK 4/S/...	6	6	-	12/6	-	-	-	x	-	-	-	-	x	-	-	-
ZDK 6/S/...	8	8	-	-	-	-	-	x	-	-	-	-	x	-	-	-
ZDKPE 2.5	5	5	10/5	10/5	-	-	-	-	-	-	-	-	-	-	-	-
ZDL 2,5/...	5	5	-	10/5	-	-	-	-	-	-	-	-	x	-	-	-
ZDLLD 2,5-2...	5	5	-	10/5	-	-	-	-	-	-	-	-	x	-	-	-
ZDT 2,5 ...	5	5	10/5	10/5	-	-	-	-	-	-	-	-	-	-	-	-
ZDTPE 2,5...	5	5	10/5	10/5	-	-	-	-	-	-	-	-	-	-	-	-
ZDTR 2,5	5	5	12/5	15/5	-	-	-	x	-	-	-	-	x	-	-	-
ZDU (ZPE) 10	10	5	12/5	15/5	-	x	-	-	-	-	-	-	x	x	x	-
ZDU (ZPE) 10/S...	10	5	10/5	15/5	-	x	-	-	-	-	-	-	x	x	x	-
ZDU (ZPE) 16...	12	5	12/5	15/5	-	x	-	x	-	-	-	-	x	x	x	-
ZDU (ZPE) 16/S...	12	5	10/5	15/5	-	x	-	-	-	-	-	-	x	x	x	-
ZDU (ZPE) 2,5 ...	5	5	12/5	15/5	-	-	-	x	-	-	-	-	x	x	x	-
ZDU (ZPE) 2,5-2/...	5	5	12/5	15/5	-	-	-	x	-	-	-	-	x	-	-	-
ZDU (ZPE) 35...	16	5	12/5	15/5	-	-	-	x	-	-	-	-	x	x	x	-
ZDU (ZPE) 4...	6	6	12/6	12/6	-	-	-	x	-	-	-	-	x	x	x	-
ZDU (ZPE) 4-2...	6	6	12/6	12/6	-	-	-	-	-	-	-	-	-	-	-	-
ZDU (ZPE) 6...	8	8	12/8	15/5	-	-	-	x	-	-	-	-	x	x	x	-
ZDU (ZPE) 6-2...	8	8	12/8	12/6	-	-	-	-	-	-	-	-	-	-	-	-
ZDU 1,5...	3,5	3,5	12/3,5	-	-	-	-	-	-	-	-	-	-	x	x	-
ZDUA (ZPEA) 2,5-2	5	5	8/5	15/5	-	-	-	x	-	-	-	-	x	-	-	-
ZDUA 2,5-2N	5	5	10/5	10/5	-	-	-	-	-	-	-	-	-	-	-	-
ZDUB (ZPEB) 2,5-2/...	5	5	8/5	15/5	-	-	-	-	-	-	-	-	x	-	-	-
ZEI 16	16	5	12/5	15/5	-	-	-	x	-	-	-	-	x	-	-	-
ZEI 6	10	8	12/6	12/6	-	-	-	x	-	-	-	-	x	x	x	-
ZEW 35/2	8	8	-	-	-	-	-	-	-	-	-	-	-	-	-	x
ZIA 1,5 ...	5,08	5	8/5	15/5	-	-	-	x	-	-	-	-	x	-	-	-
ZMAK 2,5	5	5	10/5	15/5	-	-	-	-	-	-	-	-	x	-	-	-
ZNT 10/S	10	5	-	-	-	-	-	-	-	-	-	-	-	-	-	-
ZNT 16/S	12	5	-	-	-	-	-	-	-	-	-	-	-	-	-	-
ZNT 2,5/S	5	5	10/5	10/5	-	-	-	-	-	-	-	-	-	-	-	-
ZNT 4/S	6	6	10/6	12/6	-	-	-	-	-	-	-	-	-	-	-	-
ZNT 6/S	8	8	10/6	12/6	-	-	-	-	-	-	-	-	-	-	-	-
ZP 2,5...	5	5	10/5	10/5	-	-	-	-	-	-	-	-	-	-	-	-
ZPE 16-2/1 AN	12	8	12/6	12/6	-	-	-	-	-	-	-	-	-	-	-	-
ZPV 1,5	5,08	5	12/5	15/5	-	x	x	x	-	-	-	-	x	-	-	-
ZRV 1,5...	5	5	8/5	10/5	-	x	x	x	-	-	-	-	x	-	-	-
ZSI 2,5...	8	8	12/5	15/5	-	-	-	x	-	-	-	-	x	-	-	-
ZSI 2,5/2...	12	5	12/5	15/5	-	-	-	x	-	-	-	-	x	-	-	-
ZSI 6-2/FC	8	6	12/6	12/6	-	-	-	-	-	-	-	-	-	-	-	-
ZT 2,5 ...	5	5	10/5	10/5	-	-	-	-	-	-	-	-	-	-	-	-
ZTD 6	8	8	12/6,5	-	-	-	-	-	-	-	-	-	-	-	-	-
ZTL 6	8	8	12/6,5	-	-	-	-	-	-	-	-	-	-	-	-	-
ZTPE 2,5 ...	5	5	10/5	10/5	-	-	-	-	-	-	-	-	-	-	-	-
ZTR 2,5...	5	5	12/5	15/5	-	-	-	x	-	-	-	-	x	-	-	-
ZTR 2,5-2...	5	5	14/5	10/5	-	-	-	-	-	-	-	-	-	-	-	-
PDL 4...	5	5	12/5	-	-	-	-	-	-	-	-	-	-	-	-	-
PDU 2,5/4...	5	5	12/5	-	-	-	-	-	-	-	-	-	-	-	-	-

Terminal markers

B

Selection table

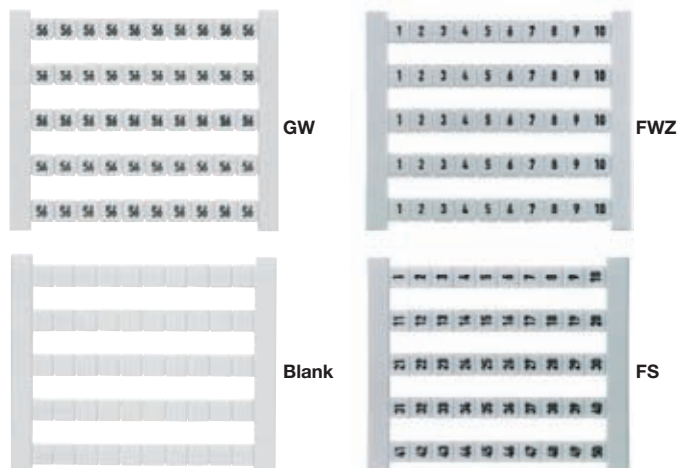
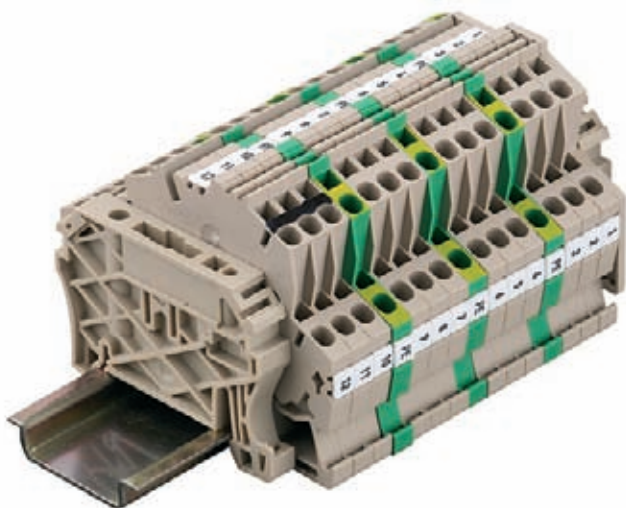
Designation

Designation	Terminal width	DEK	WS	ZS	SchT 7	SchT 9/4	SchT 14/6	WTS 3/4	WGB 5 / WAD 5	WGB 8 / WAD 8	WAD 12	WAD 27	ZGB 15 / ZGB 30	BZT 1	BZT 2	EM 8/30
PDU 6/10...	8	8	10/8													
PDU 16	12	-	10/12													
PKD 2.5/4	5	5	12/5													
PPE 2.5/4	5	5	12/5													
PPE 6/10	8	8	10/8													
PPE 16	12	-	10/12													
PNT 2.5/4	5	5	12/5													
PNT 6/10	8	8	10/8													
PNT 16	12	-	10/12													
PEI 16	12	-	10/12													
AST 1-4/35	6.2	6	-	-	-	-	-	-	-	-	-	-	-	-	-	-
AST 5/35	6.5	6	-	-	-	-	-	-	-	-	-	-	-	-	-	-
DK 4...	6	6	-	-	-	-	-	-	-	-	-	-	-	-	-	-
DKT 4...	6	6	-	-	-	-	-	-	-	-	-	-	-	-	-	-
EK 10	10	5	-	-	-	-	-	-	-	-	-	-	-	-	-	-
EK 16	12	5	-	-	-	-	-	-	-	-	-	-	-	-	-	-
EK 2.5...	6	6	-	-	-	-	-	-	-	-	-	-	-	-	-	-
EK 35...	16	5	-	-	-	-	-	-	-	-	-	-	-	-	-	-
EK 4...	6.5	6.5	-	-	-	-	-	-	-	-	-	-	-	-	-	-
EK 6/35	8	8	-	-	-	-	-	-	-	-	-	-	-	-	-	-
KDKS 1...	8	8	-	-	-	-	-	-	-	-	-	-	-	-	-	-
KSKM...	13	5	-	-	-	-	-	-	-	-	-	-	-	-	-	-
KST...	24-34	5	-	-	-	-	-	-	-	-	-	-	-	-	-	-
NT...	6-12	6	-	-	-	-	-	-	-	-	-	-	-	-	-	-
RSF 1-3...	8	5	-	-	-	-	-	-	-	-	-	-	-	-	-	-
SAK 10...	10	5	-	-	-	-	-	-	-	-	-	-	-	-	-	-
SAK 16...	12	5	-	-	-	-	-	-	-	-	-	-	-	-	-	-
SAK 2.5	6.1	6	-	-	X	-	-	-	-	-	-	-	-	-	-	-
SAK 2.5/35	5	5	-	-	X	-	-	-	-	-	-	-	-	-	-	-
SAK 35...	18	5	-	-	X	-	-	-	-	-	-	-	-	-	-	-
SAK 4...	6.5	6.5	-	-	X	-	-	-	-	-	-	-	-	-	-	-
SAK 6...	8	8	-	-	X	-	-	-	-	-	-	-	-	-	-	-
SAK 95/35	28	5	-	-	X	-	-	-	-	-	-	-	-	-	-	-
SAKC 10/35	12	6.5	-	-	X	-	-	-	-	-	-	-	-	-	-	-
SAKC 4/35	6.5	6.5	-	-	X	-	-	-	-	-	-	-	-	-	-	-
SAKG...	32-54	5	-	-	X	-	-	-	-	-	-	-	-	-	-	-
SAKR...	6.5	6.5	-	-	X	-	-	-	-	-	-	-	-	-	-	-
SAKS...	13-28	5	-	-	X	-	-	-	-	-	-	-	-	-	-	-
SAKT...	8	6.5	-	-	X	-	-	-	-	-	-	-	-	-	-	-
SAKD 2,5N	5	5	-	-	X	-	-	-	-	-	-	-	-	-	-	-
SAKA 10	12	5	-	-	X	-	-	-	-	-	-	-	-	-	-	-
SAKB 10	10	5	-	-	X	-	-	-	-	-	-	-	-	-	-	-
ASK 1	8	8	-	-	X	-	-	-	-	-	-	-	-	-	-	-
SAKK 4..	8	6.5	-	-	X	-	-	-	-	-	-	-	-	-	-	-
SAKK 10..	11.5	5	-	-	X	-	-	-	-	-	-	-	-	-	-	-
SAKH 4-10	6.5-14	5	-	-	X	-	-	-	-	-	-	-	-	-	-	-
SAKH 35	18	6.5	-	-	-	-	-	-	-	-	-	-	-	-	-	-
KMVF...	6	5	-	-	-	-	-	-	-	-	-	-	-	-	-	-
AKZ 1.5-2.5	5.1	5	-	-	-	-	-	-	-	-	-	-	-	-	-	-
AKZ 4	6.1	6	-	-	-	-	-	-	-	-	-	-	-	-	-	-
AKE 2.5	5.1	5	-	-	-	-	-	-	-	-	-	-	-	-	-	-
AKE 4	7	6.5	-	-	-	-	-	-	-	-	-	-	-	-	-	-
ADK 1	6	6	-	-	-	-	-	-	-	-	-	-	-	-	-	-
AL 1	6.5	6.5	-	-	-	-	-	-	-	-	-	-	-	-	-	-
AKA 4	6	6	-	-	-	-	-	-	-	-	-	-	-	-	-	-

DEK card with printing

The Dekafix marker is the universal marker for terminals and plug-in connectors as well as electronic modules from the Weidmüller product range. Dekafix provides you with a wide range of standard printing options. The system is particularly suitable for short sequences of numbers and is also available with customer specific printing.

- In strips for fast installation
- Large selection of ready-to-use printed markers
- Excellent printing quality thanks to the MC Laser
- Available in 4 widths
- Custom printing also possible



Technical data

Material	Polyamide 66, halogen-free
UL 94 flammability rating	V2
Temperature range	-40 °C to 100 °C
Printing	black

Ordering data

Colour	Available in all colours of the international colour code; for MC on request		
	● brown	● red	● orange
	● yellow	● green	● blue
	● violet	● grey	○ white

Qty	500 pcs
-----	---------

Pitch	DEK 5 = 5 mm : DEK 6 = 6 mm : DEK 6.5 = 6.5 mm : DEK 8 = 8 mm
-------	---

Printing variations	FW = consecutive horizontal	e.g. DEK 5 FW 1-50
	FS = consecutive vertical	e.g. DEK 5 FS 51-100
	FWZ = consecutive horizontal line	e.g. DEK 5 FWZ 1-10
	FSZ = consecutive vertical line	e.g. DEK 5 FSZ 21-30
	GW = identical horizontal	e.g. DEK 5 GW A
	GS = identical vertical	e.g. DEK 5 GS B

No. of characters	horizontal	vertical
DEK 5	max. 3 characters	max. 3 characters
DEK 6	max. 3 characters	max. 3 characters
DEK 6.5	max. 4 characters	max. 3 characters
DEK 8	max. 5 characters	max. 3 characters

Specify colour and characters for special printing

Versions DEK

Type/Print	Order No.	Type/Print	Order No.	Type/Print	Order No.	Type/Print	Order No.
DEK 5 BL NEUTRAL	0473391693	DEK 5 FWZ 51-60	0523060051	DEK 5 GW 46	0522660046	DEK 5 GW 132	0522660132
DEK 5 BR NEUTRAL	0473391692	DEK 5 FWZ 61-70	0523060061	DEK 5 GW 47	0522660047	DEK 5 GW 133	0522660133
DEK 5 FS 1-50	0473560001	DEK 5 FWZ 71-80	0523060071	DEK 5 GW 48	0522660048	DEK 5 GW 134	0522660134
DEK 5 FS 101-150	0473560101	DEK 5 FWZ 81-90	0523060081	DEK 5 GW 49	0522660049	DEK 5 GW 135	0522660135
DEK 5 FS 151-200	0473560151	DEK 5 FWZ 91-100	0523060091	DEK 5 GW 50	0522660050	DEK 5 GW 136	0522660136
DEK 5 FS 201-250	0473560201	DEK 5 FWZ L1-EIK	0354361203	DEK 5 GW 51	0522660051	DEK 5 GW 137	0522660137
DEK 5 FS 251-300	0473560251	DEK 5 FWZ L1-PE	0354361187	DEK 5 GW 52	0522660052	DEK 5 GW 138	0522660138
DEK 5 FS 301-350	0473560301	DEK 5 FWZ U,V,W,N,PE	0558360000	DEK 5 GW 53	0522660053	DEK 5 GW 139	0522660139
DEK 5 FS 351-400	0473560351	DEK 5 GE NEUTRAL	0473391687	DEK 5 GW 54	0522660054	DEK 5 GW 140	0522660140
DEK 5 FS 401-450	0473560401	DEK 5 GN NEUTRAL	0473391688	DEK 5 GW 55	0522660055	DEK 5 GW 141	0522660141
DEK 5 FS 451-500	0473560451	DEK 5 GR NEUTRAL	0473391691	DEK 5 GW 56	0522660056	DEK 5 GW 142	0522660142
DEK 5 FS 501-550	0473560501	DEK 5 GS A	0132961021	DEK 5 GW 57	0522660057	DEK 5 GW 143	0522660143
DEK 5 FS 51-100	0473560051	DEK 5 GS B	0132961022	DEK 5 GW 58	0522660058	DEK 5 GW 144	0522660144
DEK 5 FS 551-600	0473560551	DEK 5 GS C	0132961023	DEK 5 GW 59	0522660059	DEK 5 GW 145	0522660145
DEK 5 FS 601-650	0473560601	DEK 5 GS D	0132961024	DEK 5 GW 60	0522660060	DEK 5 GW 146	0522660146
DEK 5 FS 651-700	0473560651	DEK 5 GS E	0132961025	DEK 5 GW 61	0522660061	DEK 5 GW 147	0522660147
DEK 5 FS 701-750	0473560701	DEK 5 GS F	0132961026	DEK 5 GW 62	0522660062	DEK 5 GW 148	0522660148
DEK 5 FS 751-800	0473560751	DEK 5 GS G	0132961027	DEK 5 GW 63	0522660063	DEK 5 GW 149	0522660149
DEK 5 FS 801-850	0473560801	DEK 5 GS H	0132961028	DEK 5 GW 64	0522660064	DEK 5 GW 150	0522660150
DEK 5 FS 851-900	0473560851	DEK 5 GS I	0132961029	DEK 5 GW 65	0522660065	DEK 5 GW 151	0522660151
DEK 5 FS 901-950	0473560901	DEK 5 GS J	0132961030	DEK 5 GW 66	0522660066	DEK 5 GW 152	0522660152
DEK 5 FS 951-999	0473560951	DEK 5 GS K	0132961031	DEK 5 GW 67	0522660067	DEK 5 GW 153	0522660153
DEK 5 FSZ 1-10	0460660001	DEK 5 GS L	0132961032	DEK 5 GW 68	0522660068	DEK 5 GW 154	0522660154
DEK 5 FSZ 11-20	0460660011	DEK 5 GS M	0132961033	DEK 5 GW 69	0522660069	DEK 5 GW 155	0522660155
DEK 5 FSZ 21-30	0460660021	DEK 5 GS N	0132961034	DEK 5 GW 70	0522660070	DEK 5 GW 156	0522660156
DEK 5 FSZ 31-40	0460660031	DEK 5 GS O	0132961035	DEK 5 GW 71	0522660071	DEK 5 GW 157	0522660157
DEK 5 FSZ 41-50	0460660041	DEK 5 GS P	0132961036	DEK 5 GW 72	0522660072	DEK 5 GW 158	0522660158
DEK 5 FSZ 51-60	0460660051	DEK 5 GS PE	0157261187	DEK 5 GW 73	0522660073	DEK 5 GW 159	0522660159
DEK 5 FSZ 61-70	0460660061	DEK 5 GS Q	0157261037	DEK 5 GW 74	0522660074	DEK 5 GW 160	0522660160
DEK 5 FSZ 71-80	0460660071	DEK 5 GS R	0132961038	DEK 5 GW 75	0522660075	DEK 5 GW 161	0522660161
DEK 5 FSZ 81-90	0460660081	DEK 5 GS S	0132961039	DEK 5 GW 76	0522660076	DEK 5 GW 162	0522660162
DEK 5 FSZ 91-100	0460660091	DEK 5 GS T	0132961040	DEK 5 GW 77	0522660077	DEK 5 GW 163	0522660163
DEK 5 FW 1,3,5,...99	1358460000	DEK 5 GS U	0132961041	DEK 5 GW 78	0522660078	DEK 5 GW 164	0522660164
DEK 5 FW 1-50	0473460001	DEK 5 GS V	0132961042	DEK 5 GW 79	0522660079	DEK 5 GW 165	0522660165
DEK 5 FW 10-500	0132660010	DEK 5 GS W	0132961043	DEK 5 GW 80	0522660080	DEK 5 GW 166	0522660166
DEK 5 FW 101-150	0473460101	DEK 5 GS X	0132961044	DEK 5 GW 81	0522660081	DEK 5 GW 167	0522660167
DEK 5 FW 151-200	0473460151	DEK 5 GS Y	0132961045	DEK 5 GW 82	0522660082	DEK 5 GW 168	0522660168
DEK 5 FW 2,4,...100	1358560000	DEK 5 GS Z	0132961046	DEK 5 GW 83	0522660083	DEK 5 GW 169	0522660169
DEK 5 FW 201-250	0473460201	DEK 5 GS ⊥	0157261202	DEK 5 GW 84	0522660084	DEK 5 GW 170	0522660170
DEK 5 FW 251-300	0473460251	DEK 5 GS ⊕	0157261203	DEK 5 GW 85	0522660085	DEK 5 GW 171	0522660171
DEK 5 FW 301-350	0473460301	DEK 5 GW	0576260000	DEK 5 GW 86	0522660086	DEK 5 GW 172	0522660172
DEK 5 FW 351-400	0473460351	DEK 5 GW 1	0522660001	DEK 5 GW 87	0522660087	DEK 5 GW 173	0522660173
DEK 5 FW 401-450	0473460401	DEK 5 GW 2	0522660002	DEK 5 GW 88	0522660088	DEK 5 GW 174	0522660174
DEK 5 FW 451-500	0473460451	DEK 5 GW 3	0522660003	DEK 5 GW 89	0522660089	DEK 5 GW 175	0522660175
DEK 5 FW 501-550	0473460501	DEK 5 GW 4	0522660004	DEK 5 GW 90	0522660090	DEK 5 GW 176	0522660176
DEK 5 FW 51-100	0473460051	DEK 5 GW 5	0522660005	DEK 5 GW 91	0522660091	DEK 5 GW 177	0522660177
DEK 5 FW 551-600	0473460551	DEK 5 GW 6	0522660006	DEK 5 GW 92	0522660092	DEK 5 GW 178	0522660178
DEK 5 FW 601-650	0473460601	DEK 5 GW 7	0522660007	DEK 5 GW 93	0522660093	DEK 5 GW 179	0522660179
DEK 5 FW 651-700	0473460651	DEK 5 GW 8	0522660008	DEK 5 GW 94	0522660094	DEK 5 GW 180	0522660180
DEK 5 FW 701-750	0473460701	DEK 5 GW 9	0522660009	DEK 5 GW 95	0522660095	DEK 5 GW 181	0522660181
DEK 5 FW 751-800	0473460751	DEK 5 GW 10	0522660010	DEK 5 GW 96	0522660096	DEK 5 GW 182	0522660182
DEK 5 FW 801-850	0473460801	DEK 5 GW 11	0522660011	DEK 5 GW 97	0522660097	DEK 5 GW 183	0522660183
DEK 5 FW 851-900	0473460851	DEK 5 GW 12	0522660012	DEK 5 GW 98	0522660098	DEK 5 GW 184	0522660184
DEK 5 FW 901-950	0473460901	DEK 5 GW 13	0522660013	DEK 5 GW 99	0522660099	DEK 5 GW 185	0522660185
DEK 5 FW 951-999	0473460951	DEK 5 GW 14	0522660014	DEK 5 GW 100	0522660100	DEK 5 GW 186	0522660186
DEK 5 FW U1-PE1	0133161114	DEK 5 GW 15	0522660015	DEK 5 GW 101	0522660101	DEK 5 GW 187	0522660187
DEK 5 FW U2-PE2	0133161115	DEK 5 GW 16	0522660016	DEK 5 GW 102	0522660102	DEK 5 GW 188	0522660188
DEK 5 FW U3-PE3	0133161116	DEK 5 GW 17	0522660017	DEK 5 GW 103	0522660103	DEK 5 GW 189	0522660189
DEK 5 FW U4-PE4	0133161117	DEK 5 GW 18	0522660018	DEK 5 GW 104	0522660104	DEK 5 GW 190	0522660190
DEK 5 FW U5-PE5	0133161118	DEK 5 GW 19	0522660019	DEK 5 GW 105	0522660105	DEK 5 GW 191	0522660191
DEK 5 FW U6-PE6	0133161119	DEK 5 GW 20	0522660020	DEK 5 GW 106	0522660106	DEK 5 GW 192	0522660192
DEK 5 FW U7-PE7	0133161120	DEK 5 GW 21	0522660021	DEK 5 GW 107	0522660107	DEK 5 GW 193	0522660193
DEK 5 FW U8-PE8	0133161121	DEK 5 GW 22	0522660022	DEK 5 GW 108	0522660108	DEK 5 GW 194	0522660194
DEK 5 FW U9-PE9	0133161122	DEK 5 GW 23	0522660023	DEK 5 GW 109	0522660109	DEK 5 GW 195	0522660195
DEK 5 FW X1-Z1	0133261150	DEK 5 GW 24	0522660024	DEK 5 GW 110	0522660110	DEK 5 GW 196	0522660196
DEK 5 FW X10-Z10	0133261159	DEK 5 GW 25	0522660025	DEK 5 GW 111	0522660111	DEK 5 GW 197	0522660197
DEK 5 FW X2-Z2	0133261151	DEK 5 GW 26	0522660026	DEK 5 GW 112	0522660112	DEK 5 GW 198	0522660198
DEK 5 FW X3-Z3	0133261152	DEK 5 GW 27	0522660027	DEK 5 GW 113	0522660113	DEK 5 GW 199	0522660199
DEK 5 FW X4-Z4	0133261153	DEK 5 GW 28	0522660028	DEK 5 GW 114	0522660114	DEK 5 GW 200	0522660200
DEK 5 FW X5-Z5	0133261154	DEK 5 GW 29	0522660029	DEK 5 GW 115	0522660115	DEK 5 GW A	0522761021
DEK 5 FW X6-Z6	0133261155	DEK 5 GW 30	0522660030	DEK 5 GW 116	0522660116	DEK 5 GW B	0522761022
DEK 5 FW X7-Z7	0133261156	DEK 5 GW 31	0522660031	DEK 5 GW 117	0522660117	DEK 5 GW BL/SW -	0576291741
DEK 5 FW X8-Z8	0133261157	DEK 5 GW 32	0522660032	DEK 5 GW 118	0522660118	DEK 5 GW C	0522761023
DEK 5 FW X9-Z9	0133261158	DEK 5 GW 33	0522660033	DEK 5 GW 119	0522660119	DEK 5 GW D	0522761024
DEK 5 FWZ 1-10	0523060001	DEK 5 GW 34	0522660034	DEK 5 GW 120	0522660120	DEK 5 GW E	0522761025
DEK 5 FWZ 1-19	0235860000	DEK 5 GW 35	0522660035	DEK 5 GW 121	0522660121	DEK 5 GW F	0522761026
DEK 5 FWZ 1-9	1572000000	DEK 5 GW 36	0522660036	DEK 5 GW 122	0522660122	DEK 5 GW G	0522761027
DEK 5 FWZ 11-20	0523060011	DEK 5 GW 37	0522660037	DEK 5 GW 123	0522660123	DEK 5 GW H	0522761028
DEK 5 FWZ 2-20	0236160000	DEK 5 GW 38	0522660038	DEK 5 GW 124	0522660124	DEK 5 GW I	0522761029
DEK 5 FWZ 21-30	0523060021	DEK 5 GW 39	0522660039	DEK 5 GW 125	0522660125	DEK 5 GW J	0522761030
DEK 5 FWZ 21-39	0235960000	DEK 5 GW 40	0522660040	DEK 5 GW 126	0522660126	DEK 5 GW K	0522761031
DEK 5 FWZ 22-40	0236260000	DEK 5 GW 41	0522660041	DEK 5 GW 127	0522660127	DEK 5 GW L	0522761032
DEK 5 FWZ 31-40	0523060031	DEK 5 GW 42	0522660042	DEK 5 GW 128	0522660128	DEK 5 GW L1	0522361075
DEK 5 FWZ 41-50	0523060041	DEK 5 GW 43	0522660043	DEK 5 GW 129	0522660129	DEK 5 GW L2	0522361076
DEK 5 FWZ 41-59	0236060000	DEK 5 GW 44	0522660044	DEK 5 GW 130	0522660130	DEK 5 GW L3	0522361077
DEK 5 FWZ 42-60	0236360000	DEK 5 GW 45	0522660045	DEK 5 GW 131	0522660131	DEK 5 GW M	0522761033

Varianten DEK

Type/Print	Order No.
DEK 5 GW MP	0537261235
DEK 5 GW N	0522761034
DEK 5 GW O	0522761035
DEK 5 GW P	0522761036
DEK 5 GW PE	0537261187
DEK 5 GW PEN	0537261188
DEK 5 GW Q	0522761037
DEK 5 GW R	0522761038
DEK 5 GW RT/SW +	0576291737
DEK 5 GW S	0522761039
DEK 5 GW T	0522761040
DEK 5 GW U	0522761041
DEK 5 GW V	0522761042
DEK 5 GW W	0522761043
DEK 5 GW W-STROM	0576261215
DEK 5 GW X	0522761044
DEK 5 GW Y	0522761045
DEK 5 GW Z	0522761046
DEK 5 GW +	0576261198
DEK 5 GW -	0576261199
DEK 5 GW ⊥	0576261202
DEK 5 GW ⊕	0576261203
DEK 5 NEUTRAL	0473360000
DEK 5 OR NEUTRAL	0473391690
DEK 5 RT NEUTRAL	0473391686
DEK 5 SW NEUTRAL	0473391694
DEK 5 VI NEUTRAL	0473391689
DEK 5/3,5 MC FS 1-10	1762320001
DEK 5/3,5 MC FS 101-110	1762320101
DEK 5/3,5 MC FS 11-20	1762320011
DEK 5/3,5 MC FS 111-120	1762320111
DEK 5/3,5 MC FS 121-130	1762320121
DEK 5/3,5 MC FS 131-140	1762320131
DEK 5/3,5 MC FS 141-150	1762320141
DEK 5/3,5 MC FS 21-30	1762320021
DEK 5/3,5 MC FS 31-40	1762320031
DEK 5/3,5 MC FS 41-50	1762320041
DEK 5/3,5 MC FS 51-60	1762320051
DEK 5/3,5 MC FS 61-70	1762320061
DEK 5/3,5 MC FS 71-80	1762320071
DEK 5/3,5 MC FS 81-90	1762320081
DEK 5/3,5 MC FS 91-100	1762320091
DEK 5/3,5 MC GW 0	1755281000
DEK 5/3,5 MC GW 1	1755280001
DEK 5/3,5 MC GW 2	1755280002
DEK 5/3,5 MC GW 3	1755280003
DEK 5/3,5 MC GW 4	1755280004
DEK 5/3,5 MC GW 5	1755280005
DEK 5/3,5 MC GW 6	1755280006
DEK 5/3,5 MC GW 7	1755280007
DEK 5/3,5 MC GW 8	1755280008
DEK 5/3,5 MC GW 9	1755280009
DEK 6 BL NEUTRAL	0468591693
DEK 6 BR NEUTRAL	0468591692
DEK 6 FS 1-50	0468760001
DEK 6 FS 101-150	0468760101
DEK 6 FS 151-200	0468760151
DEK 6 FS 201-250	0468760201
DEK 6 FS 251-300	0468760251
DEK 6 FS 301-350	0468760301
DEK 6 FS 351-400	0468760351
DEK 6 FS 401-450	0468760401
DEK 6 FS 451-500	0468760451
DEK 6 FS 501-550	0468760501
DEK 6 FS 51-100	0468760051
DEK 6 FS 551-600	0468760551
DEK 6 FS 601-650	0468760601
DEK 6 FS 651-700	0468760651
DEK 6 FS 701-750	0468760701
DEK 6 FS 751-800	0468760751
DEK 6 FS 801-850	0468760801
DEK 6 FS 851-900	0468760851
DEK 6 FS 901-950	0468760901
DEK 6 FS 951-999	0468760951
DEK 6 FSZ 1-10	0133360001
DEK 6 FSZ 11-20	0133360011
DEK 6 FSZ 21-30	0133360021
DEK 6 FSZ 31-40	0133360031
DEK 6 FSZ 41-50	0133360041
DEK 6 FSZ 51-60	0133360051
DEK 6 FSZ 61-70	0133360061
DEK 6 FSZ 71-80	0133360071
DEK 6 FSZ 81-90	0133360081
DEK 6 FSZ 91-100	0133360091

Type/Print	Order No.
DEK 6 FW 1,3,5...99	1358660000
DEK 6 FW 1-5 (10X)	0688660000
DEK 6 FW 1-50	0468660001
DEK 6 FW 101-150	0468660101
DEK 6 FW 151-200	0468660151
DEK 6 FW 2,4,...100	1358760000
DEK 6 FW 201-250	0468660201
DEK 6 FW 251-300	0468660251
DEK 6 FW 301-350	0468660301
DEK 6 FW 351-400	0468660351
DEK 6 FW 401-450	0468660401
DEK 6 FW 451-500	0468660451
DEK 6 FW 501-550	0468660501
DEK 6 FW 51-100	0468660051
DEK 6 FW 551-600	0468660551
DEK 6 FW 601-650	0468660601
DEK 6 FW 651-700	0468660651
DEK 6 FW 701-750	0468660701
DEK 6 FW 751-800	0468660751
DEK 6 FW 801-850	0468660801
DEK 6 FW 851-900	0468660851
DEK 6 FW 901-950	0468660901
DEK 6 FW 951-999	0468660951
DEK 6 FW L,N,PE	0632560000
DEK 6 FWZ 1-10	0518960001
DEK 6 FWZ 101-110	0518960101
DEK 6 FWZ 11-20	0518960011
DEK 6 FWZ 111-120	0518960111
DEK 6 FWZ 121-130	0518960121
DEK 6 FWZ 131-140	0518960131
DEK 6 FWZ 141-150	0518960141
DEK 6 FWZ 151-160	0518960151
DEK 6 FWZ 161-170	0518960161
DEK 6 FWZ 171-180	0518960171
DEK 6 FWZ 181-190	0518960181
DEK 6 FWZ 191-200	0518960191
DEK 6 FWZ 201-210	0518960201
DEK 6 FWZ 21-30	0518960021
DEK 6 FWZ 31-40	0518960031
DEK 6 FWZ 41-50	0518960041
DEK 6 FWZ 51-60	0518960051
DEK 6 FWZ 61-70	0518960061
DEK 6 FWZ 71-80	0518960071
DEK 6 FWZ 81-90	0518960081
DEK 6 FWZ 91-100	0518960091
DEK 6 FWZ L1-⊕	0631961203
DEK 6 FWZ L1-⊖	0631961187
DEK 6 FWZ R,S,T,N,⊥	0631860000
DEK 6 GE NEUTRAL	0468591687
DEK 6 GN NEUTRAL	0468591688
DEK 6 GR NEUTRAL	0468591691
DEK 6 GW 0	0526960100
DEK 6 GW 1	0526960001
DEK 6 GW 2	0526960002
DEK 6 GW 3	0526960003
DEK 6 GW 4	0526960004
DEK 6 GW 5	0526960005
DEK 6 GW 6	0526960006
DEK 6 GW 7	0526960007
DEK 6 GW 8	0526960008
DEK 6 GW 9	0526960009
DEK 6 GW 10	0526960010
DEK 6 GW 11	0526960011
DEK 6 GW 12	0526960012
DEK 6 GW 13	0526960013
DEK 6 GW 14	0526960014
DEK 6 GW 15	0526960015
DEK 6 GW 16	0526960016
DEK 6 GW 17	0526960017
DEK 6 GW 18	0526960018
DEK 6 GW 19	0526960019
DEK 6 GW 20	0526960020
DEK 6 GW 21	0526960021
DEK 6 GW 22	0526960022
DEK 6 GW 23	0526960023
DEK 6 GW 24	0526960024
DEK 6 GW 25	0526960025
DEK 6 GW 26	0526960026
DEK 6 GW 27	0526960027
DEK 6 GW 28	0526960028
DEK 6 GW 29	0526960029
DEK 6 GW 30	0526960030
DEK 6 GW 31	0526960031
DEK 6 GW 32	0526960032
DEK 6 GW 33	0526960033
DEK 6 GW 34	0526960034

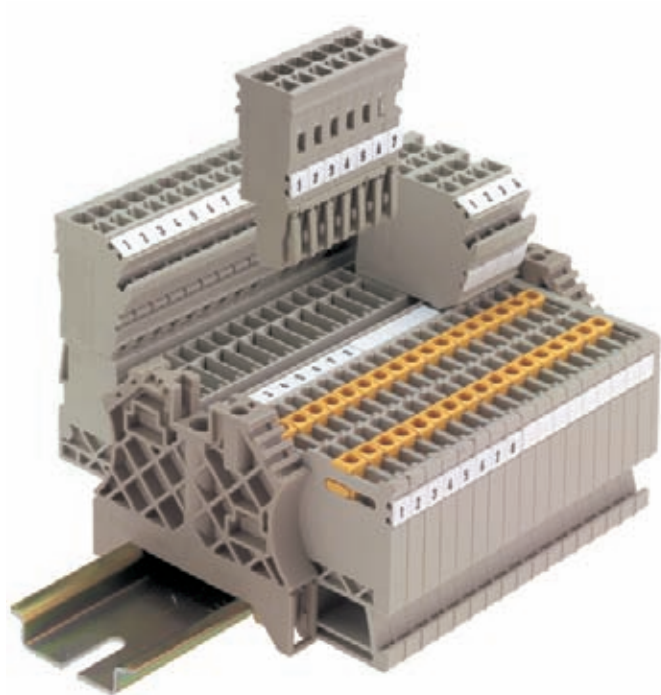
Type/Print	Order No.
DEK 6 GW 35	0526960035
DEK 6 GW 36	0526960036
DEK 6 GW 37	0526960037
DEK 6 GW 38	0526960038
DEK 6 GW 39	0526960039
DEK 6 GW 40	0526960040
DEK 6 GW 41	0526960041
DEK 6 GW 42	0526960042
DEK 6 GW 43	0526960043
DEK 6 GW 44	0526960044
DEK 6 GW 45	0526960045
DEK 6 GW 46	0526960046
DEK 6 GW 47	0526960047
DEK 6 GW 48	0526960048
DEK 6 GW 49	0526960049
DEK 6 GW 50	0526960050
DEK 6 GW 51	0526960051
DEK 6 GW 52	0526960052
DEK 6 GW 53	0526960053
DEK 6 GW 54	0526960054
DEK 6 GW 55	0526960055
DEK 6 GW 56	0526960056
DEK 6 GW 57	0526960057
DEK 6 GW 58	0526960058
DEK 6 GW 59	0526960059
DEK 6 GW 60	0526960060
DEK 6 GW 61	0526960061
DEK 6 GW 62	0526960062
DEK 6 GW 63	0526960063
DEK 6 GW 64	0526960064
DEK 6 GW 65	0526960065
DEK 6 GW 66	0526960066
DEK 6 GW 67	0526960067
DEK 6 GW 68	0526960068
DEK 6 GW 69	0526960069
DEK 6 GW 70	0526960070
DEK 6 GW 71	0526960071
DEK 6 GW 72	0526960072
DEK 6 GW 73	0526960073
DEK 6 GW 74	0526960074
DEK 6 GW 75	0526960075
DEK 6 GW 76	0526960076
DEK 6 GW 77	0526960077
DEK 6 GW 78	0526960078
DEK 6 GW 79	0526960079
DEK 6 GW 80	0526960080
DEK 6 GW 81	0526960081
DEK 6 GW 82	0526960082
DEK 6 GW 83	0526960083
DEK 6 GW 84	0526960084
DEK 6 GW 85	0526960085
DEK 6 GW 86	0526960086
DEK 6 GW 87	0526960087
DEK 6 GW 88	0526960088
DEK 6 GW 89	0526960089
DEK 6 GW 90	0526960090
DEK 6 GW 91	0526960091
DEK 6 GW 92	0526960092
DEK 6 GW 93	0526960093
DEK 6 GW 94	0526960094
DEK 6 GW 95	0526960095
DEK 6 GW 96	0526960096
DEK 6 GW 97	0526960097
DEK 6 GW 98	0526960098
DEK 6 GW 99	0526960099
DEK 6 GW 100	0526960100
DEK 6 GW BL/SW -	1318091741
DEK 6 GW PE	1318061187
DEK 6 GW RT/SW +	1318091737
DEK 6 GW +	1318061198
DEK 6 GW -	1318061199
DEK 6 GW ⊥	1318061202
DEK 6 GW ⊕	1318061203
DEK 6 NEUTRAL	0468560000
DEK 6 OR NEUTRAL	0468591690
DEK 6 RT NEUTRAL	0468591686
DEK 6 SW NEUTRAL	0468591694
DEK 6 VI NEUTRAL	0468591689
DEK 6,5 BL NEUTRAL	0468091693
DEK 6,5 FS 1-50	0468260001
DEK 6,5 FS 101-150	0468260101
DEK 6,5 FS 151-200	0468260201
DEK 6,5 FS 201-250	0468260301
DEK 6,5 FS 251-300	0468260401
DEK 6,5 FS 301-350	0468260501
DEK 6,5 FS 351-400	0468260601
DEK 6,5 FS 401-450	0468260701
DEK 6,5 FS 451-500	0468260801
DEK 6,5 FS 501-550	0468260901
DEK 6,5 FS 551-600	0468261001
DEK 6,5 FS 601-650	0468261101
DEK 6,5 FS 651-700	0468261201
DEK 6,5 FS 701-750	0468261301
DEK 6,5 FS 751-800	0468261401
DEK 6,5 FS 801-850	0468261501
DEK 6,5 FS 851-900	0468261601
DEK 6,5 FS 901-950	0468261701
DEK 6,5 FS 951-999	0468261801
DEK 6,5 FSZ 1-10	0407360001
DEK 6,5 FSZ 11-20	0407360011
DEK 6,5 FSZ 21-30	0407360021

Type/Print	Order No.
DEK 6,5 FSZ 31-40	0407360031
DEK 6,5 FSZ 41-50	0407360041
DEK 6,5 FSZ 51-60	0407360051
DEK 6,5 FSZ 61-70	0407360061
DEK 6,5 FSZ 71-80	0407360071
DEK 6,5 FSZ 81-90	0407360081
DEK 6,5 FSZ 91-100	0407360091
DEK 6,5 FW 1-50	0468160001
DEK 6,5 FW 101-150	0468160101
DEK 6,5 FW 151-200	0468160151
DEK 6,5 FW 201-250	0468160201
DEK 6,5 FW 251-300	0468160251
DEK 6,5 FW 301-350	0468160301
DEK 6,5 FW 351-400	0468160351
DEK 6,5 FW 401-450	0468160401
DEK 6,5 FW 451-500	0468160451
DEK 6,5 FW 501-550	0468160501
DEK 6,5 FW 51-100	0468160051
DEK 6,5 FW L1- h	0632161203
DEK 6,5 FW L1-PE	0632161187
DEK 6,5 FWZ 1-10	0519060001
DEK 6,5 FWZ 11-20	0519060011
DEK 6,5 FWZ 21-30	0519060021
DEK 6,5 FWZ 31-40	0519060031
DEK 6,5 FWZ 41-50	0519060041
DEK 6,5 FWZ 51-60	0519060051
DEK 6,5 FWZ 61-70	0519060061
DEK 6,5 FWZ 71-80	0519060071
DEK 6,5 FWZ 81-90	0519060081
DEK 6,5 FWZ 91-100	0519060091
DEK 6,5 GE NEUTRAL	0468091687
DEK 6,5 GN NEUTRAL	0468091688
DEK 6,5 NEUTRAL	0468091689
DEK 6,5 OR NEUTRAL	0468091690
DEK 6,5 RT NEUTRAL	0468091686
DEK 6,5 SW NEUTRAL	0468091694
DEK 6,5 VI NEUTRAL	0468091689
DEK 8 BEDR./FARBIG	1289690000
DEK 8 FS 1-50 TAMPOPR.	1653350001
DEK 8 FS 51-100 TAMPOPR.	1653350051
DEK 8 FSZ 1-10	1289660001
DEK 8 FSZ 11-20	1289660011
DEK 8 FSZ 21-30	1289660021
DEK 8 FSZ 31-40	1289660031
DEK 8 FSZ 41-50	1289660041
DEK 8 FSZ 51-60	1289660051
DEK 8 FSZ 61-70	1289660061
DEK 8 FSZ 71-80	1289660071
DEK 8 FSZ 81-90	1289660081
DEK 8 FSZ 91-100	1289660091
DEK 8 FW 1-50 TAMPOPR.	1653340001
DEK 8 FW 51-100 TAMPOPR.	1653340051
DEK 8 FWZ 1-10	1276960001
DEK 8 FWZ 101-110	1276960101
DEK 8 FWZ 11-20	1276960011
DEK 8 FWZ 111-120	1276960111
DEK 8 FWZ 121-130	1276960121
DEK 8 FWZ 131-140	1276960131
DEK 8 FWZ 141-150	1276960141
DEK 8 FWZ 21-30	1276960021
DEK 8 FWZ	

DEK MultiCard

The Dekafix marker in MultiCard format is the universal marker for all kinds of connectors and also electronic modules from the Weidmüller product range. The blank DEK marker is ideal for flexible, fast printing in situ with our innovative labelling systems SMark-Laser, PrintJet, MCP Plus Plotter or MC-Mobilo. The system is particularly suitable for short sequences of numbers and is also available with special printing.

- In strips for fast installation
- Flexible, fast printing on site during installation
- Excellent printing quality thanks to the Weidmüller MultiCard printers
- Available in 6 widths
- Custom printing with the MC Laser also possible



Technical data

Material	Polyamide 66, halogen-free
UL 94 flammability rating	V2
Temperature range	-40 °C to 100 °C
Printing	black

Ordering data

Colour	Available in all colours of the international colour code; for MC on request									
	<table border="0"> <tr> <td>● brown</td> <td>● red</td> <td>● orange</td> </tr> <tr> <td>● yellow</td> <td>● green</td> <td>● blue</td> </tr> <tr> <td>● violet</td> <td>● grey</td> <td>○ white</td> </tr> </table>	● brown	● red	● orange	● yellow	● green	● blue	● violet	● grey	○ white
● brown	● red	● orange								
● yellow	● green	● blue								
● violet	● grey	○ white								
Special printing	Specify special printing and colours per diskette, Excel file or using the M-Print® PRO software.									
Minimum order quantity	1 pack									
Notes on mounting	<p>Mount in strips when the marker pitch (width) corresponds to the pitch of the terminals.</p> <p>For example, DEK 5 mm pitch for terminals with 5 mm pitch such as the WDU 2.5.</p> <p>Mount individual markers when the terminal pitch is larger than the marker pitch (width).</p> <p>For example, DEK 6.5 mount individually on WDU 6 terminals.</p>									

Dekafix - the universal marker for SAK series, W-series, Z-series, P-series and I-series plus WEICOS connectors and electronics devices.



Clamping width: 3.5 mm

DEK - blank

Ordering data

Type	Material colour	Length	Qty.	Order No.
DEK 5/3,5 MC	white	5 mm	500	1755270000

DEK - Custom printing

Type	Material colour	Length	Qty.	Order No.
DEK 5/3,5 MC	white	5 mm	100	1767730000

Clamping width: 5.0 mm

DEK - blank


Type	Material colour	Length	Qty.	Order No.
DEK 5/5 MC	white	5 mm	1000	1609801044
DEK 5/5 Plus MC	white	5 mm	1000	1854490000
DEK 5/5 Plus MC GE	yellow	5 mm	1000	1907520000
DEK 5/5 MC GE	yellow	5 mm	1000	1609801687
DEK 5/5 MC BL	Blue	5 mm	1000	1609801693
DEK 5/5 MC GR	grey	5 mm	1000	1609801691
DEK 5/5 MC GN	green	5 mm	1000	1609801688
DEK 5/5 MC RT	red	5 mm	1000	1609801686

DEK - Custom printing


Type	Material colour	Length	Qty.	Order No.
DEK 5/5 MC	white	5 mm	200	1609810000
DEK 5/5 Plus MC	white	5 mm	200	1854500000

Clamping width: 6.0 / 6.5 mm

DEK - blank

Type	Material colour	Length	Qty.	Order No.
DEK 5/6 MC	white	5 mm	1000	1609820000
DEK 5/6 MC PLUS 	white	5 mm	1000	1011320000
DEK 5/6.5 MC	white	5 mm	900	1609840000

DEK - Custom printing

Type	Material colour	Length	Qty.	Order No.
DEK 5/6 MC SDR	white	5 mm	200	1609830000
DEK 5/6 MC SDR PLUS 	white	5 mm	200	1038650000
DEK 5/6.5 MC	white	5 mm	180	1609850000

Clamping width: 7.5 / 8.0 mm

DEK - blank

Type	Material colour	Length	Qty.	Order No.
DEK 5/7.5 MC	white	5 mm	320	1720620000
DEK 5/8 MC	white	5 mm	800	1856740000

DEK - Custom printing

Type	Material colour	Length	Qty.	Order No.
DEK 5/7.5 MC	white	5 mm	64	1770490000
DEK 5/8 MC	white	5 mm	160	1856750000

WS

WS markers are designed specifically for W series terminals. But thanks to their system compatibility, WS markers can also be used with the I series, Z series and P series. The generous size of these markers permit long characters strings and multiple-line printing.

WS markers are ideal for labelling where long, individual character strings are required. And the proven MultiCard format makes labelling possible with the SMark-Laser, PrintJet, MCP Plus Plotter or MC-Mobilo as well.

- Mount in strips or individually
- Markers in the proven MultiCard format
- Excellent printing quality thanks to the Weidmüller MultiCard printers



Technical data

Material	Polyamide 66, halogen-free
UL 94 flammability rating	V2
Temperature range	-40 °C to 100 °C
Printing	black

Bestellhinweis

Colour	Available in all colours of the international colour code; for MC on request ● brown ● red ● orange ● yellow ● green ● blue ● violet ● grey ○ white
Special printing	Specify special printing and colours per diskette, Excel file or using the M-Print® PRO software.
Minimum order quantity	1 pack
Notes on mounting	Mount in strips when the marker pitch (width) corresponds to the pitch of the terminals. For example, WS 10/6 = 6 mm pitch for terminals with 6 mm pitch such as the WDU 4. Mount individual markers when the terminal pitch is larger than the marker pitch (width). For example, WS 12/6.5 mount individually on WDU 6 terminals. Weidmüller markers with 5 mm pitch (width) are suitable for all widths of terminals.

ZS

ZS

ZS markers – in the proven MultiCard format – were specially developed for Z series terminals. They provide users with a large labelling area. Their unique hinged form means that cross-connectors, for example, are still readily accessible without having to remove the marker. Markers can be clipped on in strips to guarantee fast installation, but individual markers are easily separated.

- Hinged labelling area
- Mount in strips or individually
- Markers in the proven MultiCard format
- Flexible, fast printing on site during installation



Technical data

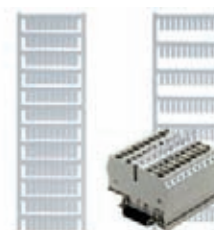
Material	Polyamide 66, halogen-free
UL 94 flammability rating	V2
Temperature range	-40 °C to 100 °C
Printing	black

Ordering data

Colour	white
Notes on mounting	height x width (pitch), e.g. ZS 10/5: 10 mm high, 5 mm wide = 5 mm pitch
Special printing	Specify special printing per diskette, Excel file or using the M-Print® PRO software.
Suitable printing systems	SMark-Laser, PrintJet, MCP Plus Plotter, MC-Mobilo
Minimum order quantity	1 pack

WS / ZS

WS markers are perfect for the connectors of the W-series, I-series and Z-series. WS 10/5 and 10/6 Middle are fitted with a centre foot and can be used for the I-series. The ZS markers are specially conceived for the Z-series.



Clamping width: 3.5 mm

WS - blank

Ordering data

Type	Material colour	Length	Qty.	Order No.
WS 12/3,5 MC	white	12 mm	600	1778270000

WS - Custom printing

Type	Material colour	Length	Qty.	Order No.
WS 12/3,5 MC	white	12 mm	120	1778280000

Clamping width: 5.0 mm

WS - blank

Type	Material colour	Length	Qty.	Order No.
WS 8/5 MC	white	8 mm	720	1640740000
WS 8/5 MC GE	yellow	8 mm	720	1773521687
WS 8/5 MC RT	red	8 mm	720	1773521686
WS 12/5 MC	white	12 mm	720	1609860000
WS 8/5 MC BL	Blue	8 mm	720	1773521693
WS 8/5 MC OR	Orange	8 mm	720	1773521690
WS 8/5 PLUS MC	white	8 mm	600	1951870000
WS 10/5 MC	white	10 mm	720	1635000000
WS 10/5 MC GE	yellow	10 mm	720	1773531687
WS 10/5 MC middle	white	10 mm	720	1792000000
WS 10/5 MC RT	red	10 mm	720	1773531686
WS 10/5 MC BL	Blue	10 mm	720	1773531693
WS 12/5 MC GE	yellow	12 mm	720	1773541687
WS 12/5 MC RT	red	12 mm	720	1773541686
WS 12/5 MC BL	Blue	12 mm	720	1773541693
WS 12/5 MC OR	Orange	12 mm	720	1773541690
WS 12/5 MC PLUS	white	12 mm	600	1927510000
WS 14/5 MC	white	14 mm	480	1768090000
WS 15/5 MC	white	15 mm	480	1609880000
WS 15/5 MC GE	yellow	15 mm	480	1773571687

WS - Custom printing

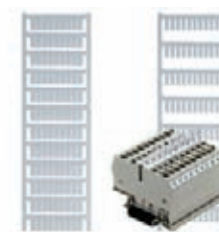
Type	Material colour	Length	Qty.	Order No.
WS 8/5 MC	white	8 mm	144	1640750000
WS 8/5 MC PLUS	white	8 mm	120	1038790000
WS 10/5 MC	white	10 mm	144	1635010000
WS 10/5 MC middle	white	10 mm	144	1792010000
WS 12/5 MC	white	12 mm	144	1609870000
WS 12/5 MC PLUS	white	12 mm	120	1927520000
WS 15/5 MC	white	15 mm	96	1609890000

Clamping width: 6.0 mm

WS - blank

Type	Material colour	Length	Qty.	Order No.
WS 8/6 PLUS MC	white	8 mm	600	1951880000
WS 10/6 MC	white	10 mm	600	1828450000
WS 10/6 MC middle	white	10 mm	600	1818400000
WS 10/6 MC Middle GN	green	10 mm	600	1917420000
WS 10/6 MC Middle GE	yellow	10 mm	600	1917430000
WS 10/6 MC Middle RT	red	10 mm	600	1917440000
WS 10/6 MC Middle OR	Orange	10 mm	600	1917410000
WS 12/6 MC	white	12 mm	600	1609900000
WS 12/6 MC GE	yellow	12 mm	600	1773551687
WS 12/6 MC RT	red	12 mm	600	1773551686
WS 12/6 MC BL	Blue	12 mm	600	1773551693
WS 12/6 MC OR	Orange	12 mm	600	1773551690
WS 12/6 MC BR	brown	12 mm	600	1773551692
WS 12/6 MC VI	magenta	12 mm	600	1773551689
WS 12/6 MC PLUS	white	12 mm	600	1927530000

WS markers are perfect for the connectors of the W-series, I-series and Z-series. WS 10/5 and 10/6 Middle are fitted with a centre foot and can be used for the I-series. The ZS markers are specially conceived for the Z-series.



Ordering data

WS - Custom printing

Type	Material colour	Length	Qty.	Order No.
WS 8/6 PLUS MC	white	8 mm	120	1038820000
WS 10/6 MC	white	10 mm	120	1828460000
WS 10/6 MC middle	white	10 mm	120	1818410000
WS 12/6 MC	white	12 mm	120	1609910000
WS 12/6 MC PLUS	white	12 mm	120	1927540000

Clamping width: 6.5 mm

WS - blank

Type	Material colour	Length	Qty.	Order No.
WS 12/6,5 MC	white	12 mm	540	1609920000
WS 12/6,5 MC GE	yellow	12 mm	540	1773561687
WS 12/6,5 MC RT	red	12 mm	540	1773561686
WS 12/6,5 MC BL	Blue	12 mm	540	1773561693
WS 12/6,5 MC GN	green	12 mm	540	1773561688

WS - Custom printing

Type	Material colour	Length	Qty.	Order No.
WS 12/6,5 MC	white	12 mm	108	1609930000

Clamping width: 8.0 mm

WS - blank

Type	Material colour	Length	Qty.	Order No.
WS 10/8 MC	white	10 mm	420	1905950000
WS 12/8 MC	white	12 mm	420	1906000000

WS - Custom printing

Type	Material colour	Length	Qty.	Order No.
WS 10/8 MC	white	10 mm	84	1906030000
WS 12/8 MC	white	12 mm	84	1906010000

Clamping width: 12.0 / 15.0 mm

WS - blank

Type	Material colour	Length	Qty.	Order No.
WS 10/12 MC	white	10 mm	300	1905970000
WS 10/15 MC	white	10 mm	240	1854090000

WS - Custom printing

Type	Material colour	Length	Qty.	Order No.
WS 10/12 MC	white	10 mm	60	1906060000
WS 10/15 MC	white	10 mm	48	1854100000

Clamping width: 5.0 mm

ZS - blank

Type	Material colour	Length	Qty.	Order No.
ZS 10/5 MC	white	10 mm	480	1610000000
ZS 15/5 MC	white	15 mm	480	1646630000

ZS - Custom printing

Type	Material colour	Length	Qty.	Order No.
ZS 10/5 MC	white	10 mm	96	1610010000
ZS 15/5 MC	white	15 mm	96	1646640000

Clamping width: 6.0 mm

ZS - blank

Type	Material colour	Length	Qty.	Order No.
ZS 12/6 MC	white	12 mm	400	1610020000

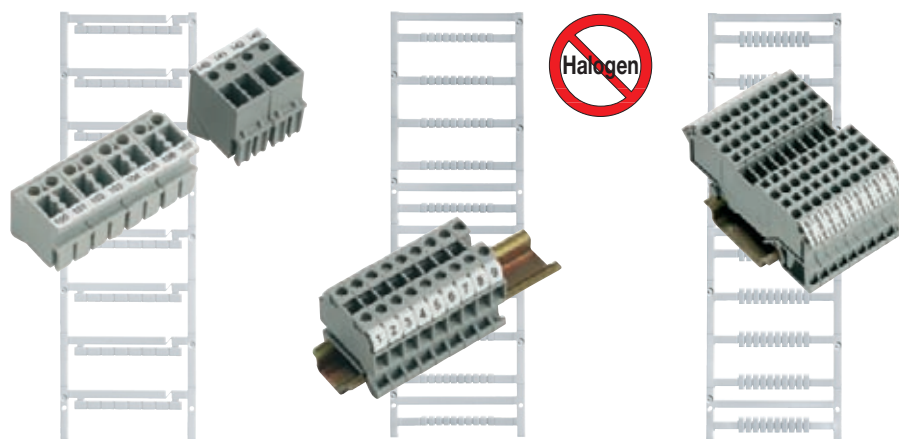
ZS - Custom printing

Type	Material colour	Length	Qty.	Order No.
ZS 12/6 MC	white	12 mm	80	1610030000

MultiFit

MultiFit is Weidmüller's marker system for use with other makes of terminals with pitches of 4, 5, 6, 7.5, 8 and 10 mm.

- Blank markers ready for users to print with SMark-Laser, PrintJet, Plotter or MC-Mobilo
- Individually printed markers supplied based on customer CAD data or specifications
- One marker suitable for various makes of terminals










Technical data









Material	Polyamide 66, halogen-free
UL 94 flammability rating	V2
Temperature range	-40 °C to 100 °C
Printing	black

Ordering data

Colour	Available in all colours of the international colour code; for MC on request ● brown ● red ● orange ● yellow ● green ● blue ● violet ● grey ○ white
Special printing	Specify special printing and colours per diskette, Excel file or using the M-Print® PRO software.
Minimum order quantity	1 pack

Application options

	 MF 8/5	 MF 10/5 MF 10/6	 MF 12/5	 MF 5/4 MF 5/5 MF 5/6	 MF-W 5/5 Mini	 MF-W 9/4 MF-W 9/5 MF-W 9/6	 MF-W 9/5 F MF-W 9/4.2 F MF-W 9/5.2 F MF-W 9/6.2 F
Wago	●	●	●		● Similar to the WagoMini WSB Type 248-...264-...	● Similar to the Wago WSB Type 209-...249-...	● Similar to the Wago WMB Type 793-...794-... For Wago TopJob S
Phoenix	●	●	●	● MF 5/5 Similar to the Phoenix Contact ZBF 5 MF 5/6 Similar to the Phoenix Contact ZBF 6 MF 5/4 Similar to the Phoenix ZBF 4			
Wieland	●	●	●				
Legrand	●	●	●		●	●	●
Entrelec	●	●	●		●		
Télémechanique	●	●	●				

	 MF 10/8	 MF 10/10	 MF 4/5.2	 MF 5/7.5	 MF 10/5 MF 12/5	 MF-SI	 MF-WO	 MFF
Siemens						●		
Phoenix	● ZB 8	● ZB 10	● BN-ZB 5.2	● BN-ZB 7.5				
Wieland								
Legrand								
Entrelec	●	●						
Woertz							●	
Adels RKW				● BZ 14				
Cabur					● Cabur			
Festo								●

● = OK

(Please select the marker according to the width of the terminal)

Please note:

The recommended applications given above do not release the user from his obligation to check the applicability in each individual application. The marker/terminal combination should in each case be chosen in such a way that either the marker pitch matches the terminal pitch, or the marker pitch is smaller than the terminal pitch.


MultiFit for use with other makes of terminals




Clamping width: 4.0 mm

MultiFit - blank

Ordering data

Type	Material colour	Length	Qty.	Order No.
MF 5/4 MC	white	5 mm	500	1877690000
MFF 9/4 MC	white	9 mm	500	1877720000
MF-W 9/4 MC	white	9 mm	500	1877730000
MF-W 9/4.2F MC	 white	9 mm	500	1011430000

MultiFit - Custom printing

Type	Material colour	Length	Qty.	Order No.
MF 5/4 MC	white	5 mm	100	1877670000
MFF 9/4 MC	white	9 mm	100	1877700000
MF-W 9/4 MC	white	9 mm	100	1877710000
MF-W 9/4.2F MC	 white	9 mm	100	1038750000

Clamping width: 5.0 mm

MultiFit - blank

Type	Material colour	Length	Qty.	Order No.
MF 4/5,2 MC	white	4 mm	500	1907530000
MF 5/5 MC	white	5 mm	500	1816250000
MF-W 5/5 MC Mini	white	5 mm	500	1816240000
MF-W 5/5 MC Mini GN	green	5 mm	500	1924290000
MF-W 5/5 MC Mini BL	Blue	5 mm	500	1924270000
MF-W 5/5 MC Mini GE	yellow	5 mm	500	1924280000
MF-W 5/5 MC Mini RT	red	5 mm	500	1924260000
MF-WO 5/5 MC	white	5 mm	400	1716800000
MF 8/5 MC	white	8 mm	600	1677140000
MF-SI 8/5 MC	white	8 mm	400	1889180000
MF-W 9/5 MC	white	9 mm	500	1816270000
MF-W 9/5F MC	white	9 mm	500	1816280000
MF-W 9/5.2F MC	 white	9 mm	500	1011410000
MF-WO 9/5 MC	white	9 mm	400	1716840000
MF 10/5 MC	white	10 mm	600	1677160000
MF-SI 10/5 MC	white	10 mm	400	1889190000
MF 10/5 MC Cabur	white	10 mm	600	1854510000
MF 12/5 MC	white	12 mm	600	1677180000
MF-WO 12/5 MC	white	12 mm	400	1692270000
MF 12/5 MC Cabur	white	12 mm	600	1854520000

MultiFit - Custom printing

Type	Material colour	Length	Qty.	Order No.
MF 4/5.2 MC	white	4 mm	100	1038690000
MF 5/5 MC	white	5 mm	500	1816320000
MF-W 5/5 Mini MC	white	5 mm	500	1816310000
MF-WO 5/5 MC	white	5 mm	80	1716810000
MF 8/5 MC	white	8 mm	120	1677150000
MF-SI 8/5 MC	white	8 mm	80	1886270000
MF-W 9/5 MC	white	9 mm	500	1816340000
MF-W 9/5F MC	white	9 mm	500	1816350000
MF-WO 9/5 MC	white	9 mm	80	1716850000
MF-W 9/5.2F MC	 white	9 mm	100	1038760000
MF 10/5 MC	white	10 mm	120	1677170000
MF-SI 10/5 MC	white	10 mm	80	1889170000
MF 10/5 MC CABUR	white	10 mm	120	1038660000
MF 12/5 MC	white	12 mm	120	1677190000
MF-WO 12/5 MC	white	12 mm	80	1692280000
MF 12/5 MC CABUR	white	12 mm	120	1038670000



Clamping width: 6.0 mm

MultiFit - blank

Ordering data

Type	Material colour	Length	Qty.	Order No.
MF 5/6 MC	white	5 mm	500	1816260000
MF-SI 8/6 MC	white	8 mm	320	1889240000
MF-W 9/6 MC	white	9 mm	500	1816290000
MF-W 9/6.2F MC	white	9 mm	500	1011420000
MF-WO 9/6 MC	white	9 mm	400	1716820000
MF 10/6 MC	white	10 mm	600	1677220000
MFF 10/6 MC	white	10 mm	600	1856780000
MF-SI 10/6 MC	white	10 mm	320	1889260000
MF-WO 12/6 MC	white	12 mm	400	1692290000

MultiFit - Custom printing

Type	Material colour	Length	Qty.	Order No.
MF 5/6 MC	white	5 mm	500	1816330000
MF-SI 8/6 MC	white	8 mm	64	1889230000
MF-W 9/6 MC	white	9 mm	500	1816360000
MF-WO 9/6 MC	white	9 mm	80	1716830000
MF-W 9/6.2F MC	white	9 mm	100	1038770000
MF 10/6 MC	white	10 mm	120	1677230000
MFF 10/6 MC	white	10 mm	120	1856790000
MF-SI 10/6 MC	white	10 mm	64	1889250000
MF-WO 12/6 MC	white	12 mm	80	1692300000

Clamping width: 6.5 / 7.5 mm

MultiFit - blank

Type	Material colour	Length	Qty.	Order No.
MF 5/ 7,5 MC	white	5	320	1877680000
MF-SI 7/5-6,5 MC	white	7	320	1889780000
MF-SI 10/5-6,5 MC	white	10	320	1889800000

MultiFit - Custom printing

Type	Material colour	Length	Qty.	Order No.
MF 5/7,5 MC	white	5	64	1877660000
MF-SI 7/5-6,5 MC	white	7	64	1889770000
MF-SI 10/5-6,5 MC	white	10	64	1889790000

Clamping width: 8.0 / 10.0 mm

MultiFit - blank

Type	Material colour	Length	Qty.	Order No.
MF 5/10 MC	white	5	250	1954050000
MF 10/8 MC	white	10	350	1868440000
MF 10/10 MC	white	10	200	1856760000

MultiFit - Custom printing

Type	Material colour	Length	Qty.	Order No.
MF 5/10 MC	white	5	50	1038730000
MF 10/8 MC	white	10	70	1868430000
MF 10/10 MC	white	10	40	1856770000

WAGO

	MF-W 9/4	MF-W 5/5 mini	MF-W 9/5	MF-W 9/5 F	MF-W 9/6
Feed-through terminals					
264-701/704/706		X			
264-711/714/716		X			
264-721/724/726		X			
264-731/734/736		X			
264-120/125/220/225		X			
279-101/104	X				
279-604/621	X				
279-626/826	X				
279-681...686	X				
279-831...836	X				
279-901...906	X				
279-989...995	X				
280-101/104			X	X	
280-601/602			X	X	
280-603/633/634			X	X	
280-604/621/826/626			X	X	
280-641/651/654			X	X	
280-646/656/946			X	X	
280-653/671/672			X	X	
280-681/684/650			X	X	
280-830...835			X	X	
280-901...906			X	X	
280-989...995			X	X	
280-996...999			X	X	
280-691			X	X	
281-101/104					X
281-601/604					X
281-631/651					X
281-652...654					X
281-663/664/668					X
281-678/681/684					X
281-901/902/904					X
281-992...994/998/691					X
282-101/104					X
282-601/604					X
282-681/682/684/687					X
282-901/902/904/907					X
282-992/993/691					X
283-101/104					X
283-601/604/607					X
283-671/672/674/677					X
283-901/902/904/907					X
283-992/998/691					X
284-101/104					X
284-601/604/607					X
284-621/624					X
284-681/682/684/687					X
284-691/992/993					X
284-901/902/904/907					X
285-194/195					X
285-601/604/607					X
285-634/635		X			X
285-691					X
285-992/995					X
290-861/864/867			X	X	
780-992/993			X		
781-992/993					X
782-992					X
783-992					X
784-992					X
785-601/604/607/613					X
792-... all	X				
812-140			X	X	X
859-...all	X				
870-681/682/684	X				
870-831/832/834	X				
870-901/902/904	X				
870-911/912/914	X				
880-661/662/664	X	X			
880-681/682/684	X	X			
880-831/832/834	X	X			
880-901/902/904	X	X			
880-961/964/962	X	X			

Protective earth terminals

	MF-W 9/4	MF-W 5/5 mini	MF-W 9/5	MF-W 9/5 F	MF-W 9/6
264-727		X			
264-737		X			
279-687	X				
279-837	X				
279-907	X				
280-107			X	X	
280-607			X	X	
280-637			X	X	
280-677			X	X	
280-687			X	X	
280-837			X	X	
280-907			X	X	
281-107					X
281-607					X
281-637					X
281-657					X
281-687					X
281-907					X
282-107					X
282-607					X
282-687					X
282-907					X
283-607					X
283-609					X
283-677					X
283-907					X
283-907					X
284-107					X
284-107					X
284-607					X
284-687					X
284-907					X
285-197					X
285-607					X
285-637	X				X
780-607			X	X	
780-637			X	X	
780-637					X
781-607					X
782-607					X
783-607					X
784-607					X
870-687		X			
870-837		X			
870-907		X			
870-917		X			
880-687		X	X		
880-837		X	X		
880-907		X	X		
Fuse terminals					
282-698					X
282-696					X
281-611/612/616/622					X
281-624/672					X
281-613/623					X
282-122					X
282-120					X
282-126					X
282-124					X
282-128					X
Two-tier terminals					
279-501/512/513	X				
279-504	X				
279-507	X				
279-508	X				
279-509	X				
279-517/527	X				
280-513			X	X	
280-517			X	X	
280-519/529			X	X	
280-520/530			X	X	
280-521/525			X	X	
280-522/526			X	X	
280-523/533			X	X	

	MF-W 9/4	MF-W 5/5 mini	MF-W 9/5	MF-W 9/5 F	MF-W 9/6
280-524/534			X	X	
280-527/537			X	X	
280-531			X	X	
280-532			X	X	
280-543			X	X	
281-619/629					X
281-620/630					X
870-101...104		X			
870-107		X			
870-108		X			
870-117/127		X			
870-501...504		X			
870-507		X			
870-508/509		X			
870-517/527		X			
870-531...534		X			
870-535/536		X			
870-537		X			
870-538/538		X			
870-826		X			

Three- and four-tier terminals

280-549/551			X	X	
280-550			X	X	
280-552			X	X	
280-547/557/597			X	X	
280-548/558			X	X	
281-531/532		X			X
870-551/553		X			
870-556		X			
870-558/559/567/577		X			
870-557		X			
281-530					X
780-601/602/604			X	X	
780-631/651/654			X	X	
781-601/604					X
781-631/651					X
782-601/604					X
784-601/604					X
783-601/604					X

Routing and potential terminals

727-... all					X
280-675			X		

Honeycomb elements

726-... all			X		
-------------	--	--	---	--	--

Single terminals

264-130/231			X		
264-131/230			X		
264-180264-280			X		

Pluggable relays and bases

286-... all		X			
786-... all		X			
788-... all			X		X
789-... all		X			

Multi-tier terminals

775-641			X	X	
775-642/649			X	X	
775-646			X	X	
775-645			X	X	
777-641					X
777-642					X
777-646					X
777-645					X
777-648					X
777-647					X
777-649					X
777-651					X
777-650					X
777-652					X
776-641					X
776-645/646					X
776-649/642					X
776-650/651					X

Individual mounting is possible in the case of larger terminal pitches, like the markers.

Cross-reference table

Cross-reference table

WAGO

	MF-W 9/4	MF-W 5/5 mini	MF-W 9/5	MF-W 9/5 F	MF-W 9/6
Disconnect test terminals					
280-612/614		X	X		
280-622/623/627		X	X		
280-649/676/685/695		X	X		
280-683		X	X		
280-805/836/829/839		X	X		
280-868/870/876/879	X	X			
280-869/871/880	X	X			
280-874/881/883/885	X	X			
280-875/882/884	X	X			
280-912...914		X			
281-659/660					X
281-666					X
281-683					X
281-912					X
282-131					X
282-133					X
282-135					X
282-138...141					X
282-694/699					X
282-811/821	X				X
282-860					X
282-865					X
282-866/282-695/697					X
282-870					X
781-613/623		X	X		
781-643/653					X
782-613/623					X
783-613/623					X
784-613/623					X
Initiator terminals					
269-560		X			
269-570		X			
269-574		X			
270-560/564		X			
270-570/574		X			
270-572/577		X			
270-585/586		X			
280-553/560			X	X	
280-559			X	X	
280-561			X	X	
280-563			X	X	

Wago TOPJOB S

	MF-W 9/4,2 F	MF-W 9/5,2 F	MF-W 9/6,2 F
2001-12..	X		
2001-13..	X		
2001-14..	X		
2002-12..		X	
2002-13..		X	
2002-14..		X	
2002-16..		X	
2002-22..		X	
2002-32..		X	
2002-63..		X	
2002-64..		X	
2002-71..		X	
2003-76..		X	
2004-12..			X
2004-13..			X
2004-14..			X
2005-76..			X
2006-12..			X
2006-13..			X
2006-71..			X
2010-12..			X
2010-13..			X
2016-12..			X
2016-13..			X
2016-71..			X

	MF-W 9/4	MF-W 5/5 mini	MF-W 9/5	MF-W 9/5 F	MF-W 9/6
280-564			X	X	
280-567		X	X		
280-570		X	X		
280-571		X	X		
280-573		X	X		
280-574		X	X		
280-577		X	X		
280-580		X	X		
280-582		X	X		
280-584		X	X		
280-584		X	X		
280-588		X	X		
Actuator terminals					
269-572		X			
269-585		X			
280-515			X	X	
280-554			X	X	
280-555			X	X	
280-556			X	X	
280-562			X	X	
280-565			X	X	
280-566			X	X	
280-568			X	X	
280-572			X	X	
280-575			X	X	
280-576			X	X	
280-578			X	X	
280-583			X	X	
280-585			X	X	
280-586			X	X	
280-592			X	X	
280-593			X	X	
Diode and LED terminals					
279-620	X				
279-623	X				
279-624	X				
279-673	X				
279-674	X				
279-809	X				
279-815	X				
279-915	X				
280-613		X	X		

	MF-W 9/4	MF-W 5/5 mini	MF-W 9/5	MF-W 9/5 F	MF-W 9/6
280-615			X	X	
280-623			X	X	
280-624			X	X	
280-655			X	X	
280-658			X	X	
280-673			X	X	
280-809			X	X	
280-815			X	X	
280-915			X	X	
280-940			X	X	
280-941			X	X	
280-942			X	X	
280-943			X	X	
281-603					X
281-633					X
281-634					X
281-635					X
281-636					X
281-665					X
281-673					X
281-915					X
870-540		X			
870-541		X			
870-542		X			
870-543		X			
870-590		X			
870-593		X			
870-596		X			
X-Com system					
769.... all		X			
		MF-W 5/5 mini	MF 5/10		ESG 8/11
I/O modules TOPLON					
750.... all		X	X		X

Individual mounting is possible in the case of larger terminal pitches, like the markers.

Woertz

	MF-WO 5/5	MF-WO 9/5	MF-WO 12/5	MF-WO 9/6	MF-WO 12/6
2711/60	X				
30041					X
30128					X
30143					X
30168				X	
30172					X
30176					X
30191				X	
30195					X
30228					X
30432			X		
30810		X			
30870				X	
30880			X		
30903		X			
33100					X
30005...9					X
30123...130					X
30137...8					X
30145...				X	
30150...		X			
30197/200					X
30290...1					X

Woertz

	MF-WO 5/5	MF-WO 9/5	MF-WO 12/5	MF-WO 9/6	MF-WO 12/6
30400...405	X				
30430...					
30431...				X	
30544...					X
30800...				X	
30840...44					X
30860...		X			
30890...1				X	
30902...				X	
30930...					X
30950...2				X	
3410...				X	
3424...9					X
3430...				X	
3436...8					X
3440...					X
3450...				X	
3452...				X	
3472/73/77					X
35310/3...50/3		X	X		
35310/4...90/4				X	X
35370/2...		X			

Legrand

	MF 8/5	MF 10/5	MF 10/6
390 51, 52	X	X	
390 00, 60, 77	X	X	
390 00 - 08			X
390 61 - 70			X
390 76			X
390 78 - 89			X
393 00, 29, 37, 70	X	X	
393 01 - 07			X
393 30 - 36			X
393 38, 39			X
393 71 - 82			X
396 01, 02	X	X	
396 11, 12, 13	X	X	
396 21 - 23, 42			
396 04 - 08			X
396 14 - 18			X
396 24 - 30			X
396 66			X

Festo

	MF 10/6	MF 9/4	ESG 10/17	ESG 9/20	ESG-M 8/20	ESG-M 9/17
CPE	X					
MZBH	X					
MOZBH	X					
MEBH	X					
MOEBH	X					
CPV10/14	X					
CP-E16	X					
CP-A08	X					
MHA1, MHP1		X				
JMT2H, MT2H-...-7,0			X			
JMN2H, MN2H						X
JMN2H, MN1H				X		
MVH, MOVH, MDH, MODH				X		
MV-BZ Typ 02				X		
CPV18				X		
JMT2H/MT2H-...-4,0				X		
Pneumatic elements and valve clusters					X	

Murr

	ESG-M 9/17	ESG-M 8/20	ESG 9/20	MF 10/5	MF 12/5
MVK12	X				
MASI Module DI8	X				
MVP 27114	X				
MVP 27115	X				
MVP 27116	X				
MVP 12 27777-27778	X				
276397			X		
336496			X		
336522			X		
Cube67		X			
M8 distributor				X	
MVK8				X	
MVK8 55631	X			X	
MVK MP DI 08		X			
Optocoupler					X
Miro-Series					X

Cross-reference table

Markers

	MF 5/4	MF 5/5	MF 8/5	MF 10/5	MF 12/5	MF 4/5,2	MF 5/6	MF 10/6	MF 5/7,5	MF 10/8	MF 10/10	MF 5/7,5	MF-W 9/4	MF-W 5/5 mini	MF-W 9/5	MF-W 9/5 F	MF-W 9/6	MF-SI 8/5	MF-SI 10/5	MF-SI 8/6	MF-SI 10/6	MF-SI 7/5-6,5	MF-SI 10/5-6,5	MF-WO 5/5	MF-WO 9/5	MF-WO 12/5	MF-WO 9/6	MF-WO 12/6	MF 10/5 Cabur	MF 12/5 Cabur	ESG 5/10	ESG 9/20	ESG-M 9/17	ESG-M 8/0		
Phoenix																																				
ZBF 4	X																																			
ZBF 5		X																																		
ZBF 6							X																													
ZB 4	X																																			
ZB 5			X	X	X																															
ZB 6								X																												
ZB 8										X																										
ZB 10											X																									
BN ZB 5,2						X																														
BN ZB 7,5								X																												
WAGO																																				
209-... (4 mm)													X																							
793-... (5 mm)														X	X																					
793-... (6 mm)																X																				
284-... (5 mm)													X																							
Woertz																																				
RB/5x5																								X												
RB/5x9																									X											
RB/5x12																										X										
RB/6x9																											X									
RB/6x12																												X								
Cabur																																				
CNU/8																													X	X						
Entrelec																																				
RC55														X																						
RC510			X	X	X																															
RC610								X																												
RC810										X																										
Wieland																																				
9705 A/5...			X	X	X																															
9705 A/6...								X																												
Télemecanique																																				
AB1-B5		X	X	X																																
AB1-B6								X																												
Murr																																				
KPX 4/10	X																																			
KPX 5/10...			X	X	X																															
KPX 6/10...								X																												
KPX 5/5-5 ZS		X																																		
KPX 6/5-6 ZS							X																													
KWI / KLG / KET 5/10...			X	X	X																															
KWI / KET 6/10...										X																										
KWI 6/15...								X																												
KWI 5/15...				X																																
KSI 5/7																						X														
KSI 5/10																							X													
KSI 5/7-5																	X						X													
KSI 5/10-5																		X																		
KSI 6/7-5																			X																	
KSI 6/10-5																				X																
KAB 6/12																													X							
KAB 5/5,4-5																								X												
KAB 5/9-5																									X											
KAB 5/12-5																										X										
KAB 6/9-6																											X									
WGO 5/5-5													X																							
WGO 5/10-5														X																						
WGO 5/10-5 F															X																					
TK 4,5-7,5								X								X																				
KS 5/10																																				
KTE 21/8																																X				
KES 20x8																																				X
ABB 17-9																																				X



Snap Mark

Technical specification

Material	Polyamide 66
UL 94 flammability rating	V2
Min. temperature, continuous	-40 °C
Max. temperature, continuous	100 °C
Material colour	white

Accessories

Ordering data

Type	Length	Width	Qty	Order No.
Snap Mark I	23 mm	5 mm	50	1805880000

Type	Length	Width	Qty	Order No.
DEK 5/5 MC	5 mm	5 mm	1000	1609801044
WS 10/5 MC middle	10 mm	5 mm	720	1792000000



BZT1 / BZT2

Technical specification

Material	Polyamide
UL 94 flammability rating	V2
Min. temperature, continuous	-40 °C
Max. temperature, continuous	100 °C
Material colour	beige

Accessories

Ordering data

Type	Length	Width	Qty	Order No.
BZT 1	8 mm	5 mm	100	1805490000
BZT 1 ZA	8 mm	5 mm	100	1805520000
BZT 2	12 mm	5 mm	100	1805480000
BZT 2 ZA	12 mm	5 mm	100	1805530000

Type	Length	Width	Qty	Order No.
WS 10/5 MC	10 mm	5 mm	720	1635000000

The BZT tag carrier makes possible the clear labelling of the ZDU 2.5/4/6 and ZDUA terminal families. The BZT is used with the WS 10/5 terminal markers. By creating blocks of tag carriers, the ZA version offers the maximum stability.

Tag carrier



SchT 5 / SchT 5 S

Technical specification

Material	Polyamide 66
UL 94 flammability rating	V2
Min. temperature, continuous	-40 °C
Max. temperature, continuous	100 °C
Material colour	beige

The SCHT 5 & SCHT 5 S group marker carrier is clipped directly to the TS 32 DIN rail (G-rail) or the TS 35 DIN rail (top-hat rail). It is therefore possible to provide terminal strip labelling irrespective of the terminal and the type of terminal.

Ordering data

Type	Length	Width	Qty	Order No.
SCHT 5	44,5 mm	19,5 mm	20	0292460000
SCHT 5 S	44,5 mm	9,5 mm	20	1631930000

Accessories

Type	Length	Width	No. per sheet	Qty	Order No.
ESO 5 white	40 mm	16,5 mm	60	10	1607710000
ESO 5 yellow	40 mm	16,5 mm	60	10	1631350000
ESO 5P white	40 mm	16,5 mm	60	10	1670370000
ESO 5P yellow	40 mm	16,5 mm	60	10	1670380000
ESO 5 S white	40 mm	7 mm	140	10	1631920000
STR 5 F.SCHT 5	40 mm	16,5 mm	20	20	0294000000
STR 5 S. F.SCHT 5 S	40 mm	7 mm	20	20	1631940000



SCHT 7

Technical specification

Material	Polyamide 66
UL 94 flammability rating	V2
Min. temperature, continuous	-40 °C
Max. temperature, continuous	100 °C
Material colour	white

The SCHT 7 is a hinged group marker carrier for inlay tags which still allows easy access to the clamping screw. To equip with ESO 7, 4 tags of DEK 5/5 or 2 tags of WS 10/5 Middle.

Ordering data

Type	Length	Width	Qty	Order No.
SCHT 7	39,3 mm	8 mm	20	0517960000

Accessories

Type	Length	Width	No. per sheet	Qty	Order No.
DEK 5/5 MC	5 mm	5 mm		1000	1609801044
ESO 7 white	27 mm	6,3 mm	240	10	1607720000
ESO 7 yellow	27 mm	6,3 mm	240	10	1634780000
ESO 7P white	27 mm	6,3 mm	240	10	1670390000
ESO 7P yellow	27 mm	6,3 mm	240	10	1670400000
STR 7 SCHT 7	27 mm	6,3 mm	20	20	0515300000
WS 10/5 MC middle	10 mm	5 mm		720	1792000000



SCHT 9/4 / SCHT 14/6

Technical specification

Material	Polyamide 66
UL 94 flammability rating	V2
Min. temperature, continuous	-40 °C
Max. temperature, continuous	100 °C
Material colour	beige

Accessories

SchT 9/4 and SchT 14/6 are hinged group tag holders for single dekafix and WS tags, allowing easy access to the clamping screws.

Ordering data

Type	Length	Width	Qty	Order No.
SCHT 14/6	44.3 mm	6 mm	20	1269060000
SCHT 9/4	32 mm	4 mm	20	1278460000

Type	Length	Width	Qty	Order No.
DEK 5/5 MC	5 mm	5 mm	1000	1609801044
WS 12/5 MC	12 mm	5 mm	720	1609860000



WGB 5 / WGB 8 / WAD

Technical specification

Material	Polyamide 66
UL 94 flammability rating	V2
Min. temperature, continuous	-40 °C
Max. temperature, continuous	100 °C

WGB group marker carrier for single dekafix and WS tags. The WGB also covers the cross-connection channels.

Blank WAD covers for labelling with STI pen, or a special printing for the W-series. Cross-connection channels are covered. Also available with lightning flash warning symbol to DIN 30600.

Ordering data

Type	Length	Width	Material colour	Qty	Order No.
WGB 5	33.5 mm	5 mm	beige	50	1050760000
WGB 8	33.5 mm	7.7 mm	beige	50	1050960000
WAD 5	33.5 mm	5 mm	white	50	1056060000
WAD 5 lightning flash	33.5 mm	5 mm	yellow	50	1053460000
WAD 8	33.5 mm	8 mm	white	50	1056160000
WAD 8 lightning flash	33.5 mm	8 mm	yellow	50	1053560000
WAD 12	36.2 mm	12 mm	white	50	1056260000
WAD 12 lightning flash	36.2 mm	12 mm	yellow	50	1055960000
WAD 27	64 mm	27 mm	white	10	1062960000
WAD 27 lightning flash	64 mm	27 mm	yellow	10	1062860000

WAD Custom printing

Type	Length	Width	Material colour	Qty	Order No.
WAD 5	33.5 mm	5 mm	white	100	1790060000
WAD 8	33.5 mm	8 mm	white	50	1667700000

Accessories - WGB 5 / WGB 8

Type	Length	Width	Qty	Order No.
DEK 5/5 MC	5 mm	5 mm	1000	1609801044
DEK 5/30 MC	30 mm	5 mm	100	1951920000
DEK 5/30 MC SDR	5 mm	30 mm	40	1025680000
WS 12/5 MC	12 mm	5 mm	720	1609860000

Tag carrier



ZGB 15 / ZGB 30

Technical specification

Material	Polyamide 66
UL 94 flammability rating	V2
Min. temperature, continuous	-40 °C
Max. temperature, continuous	100 °C
Material colour	white

The ZGB 15 / ZGB 30 is a hinged marker carrier. The tag holder can be fitted with the dekafix 5, WS 12/5 connector markers or with the push-in tag ESO 15 / ESO 7.

Ordering data

Type	Length	Width	Qty	Order No.
ZGB 15	15 mm	7 mm	20	1636530000
ZGB 30	32 mm	7 mm	20	1611930000

Accessories

Type	Length	Width	No. per sheet	Qty	Order No.
DEK 5/5 MC	5 mm	5 mm		1000	1609801044
WS 12/5 MC	12 mm	5 mm		720	1609860000
ESO 7 white	27 mm	6.3 mm	240	10	1607720000
ESO 7 yellow	27 mm	6.3 mm	240	10	1634780000
ESO 7P white	27 mm	6.3 mm	240	10	1670390000
ESO 7P yellow	27 mm	6.3 mm	240	10	1670400000
ESO 15 white	15 mm	6 mm	120	1	1636510000
STR 7 SCHAT 7	27 mm	6.3 mm	20	20	0515300000
STR 15 ZGB 15	15 mm	6.3 mm	20	20	1636520000



EM 8/30

Technical specification

Material	Polypropylene
UL 94 flammability rating	HB
Min. temperature, continuous	-40 °C
Max. temperature, continuous	80 °C
Material colour	transparent

The EM 8/30 end bracket marker is suitable for labelling the WEW 35/2 and ZEW 35/2 end brackets as well as marker carrier for W-series terminals. The EM 8/30 can be fitted with the ESO 7 and ESO 7P inlay tags. The pocket guarantees that the labelling is well protected against environmental influences.

Ordering data

Type	Length	Width	Qty	Order No.
EM 8/30	30 mm	8 mm	50	1806120000

Accessories

Type	Length	Width	No. per sheet	Qty	Order No.
ESO 7 white	27 mm	6.3 mm	240	10	1607720000
ESO 7 yellow	27 mm	6.3 mm	240	10	1634780000
ESO 7P white	27 mm	6.3 mm	240	10	1670390000
ESO 7P yellow	27 mm	6.3 mm	240	10	1670400000